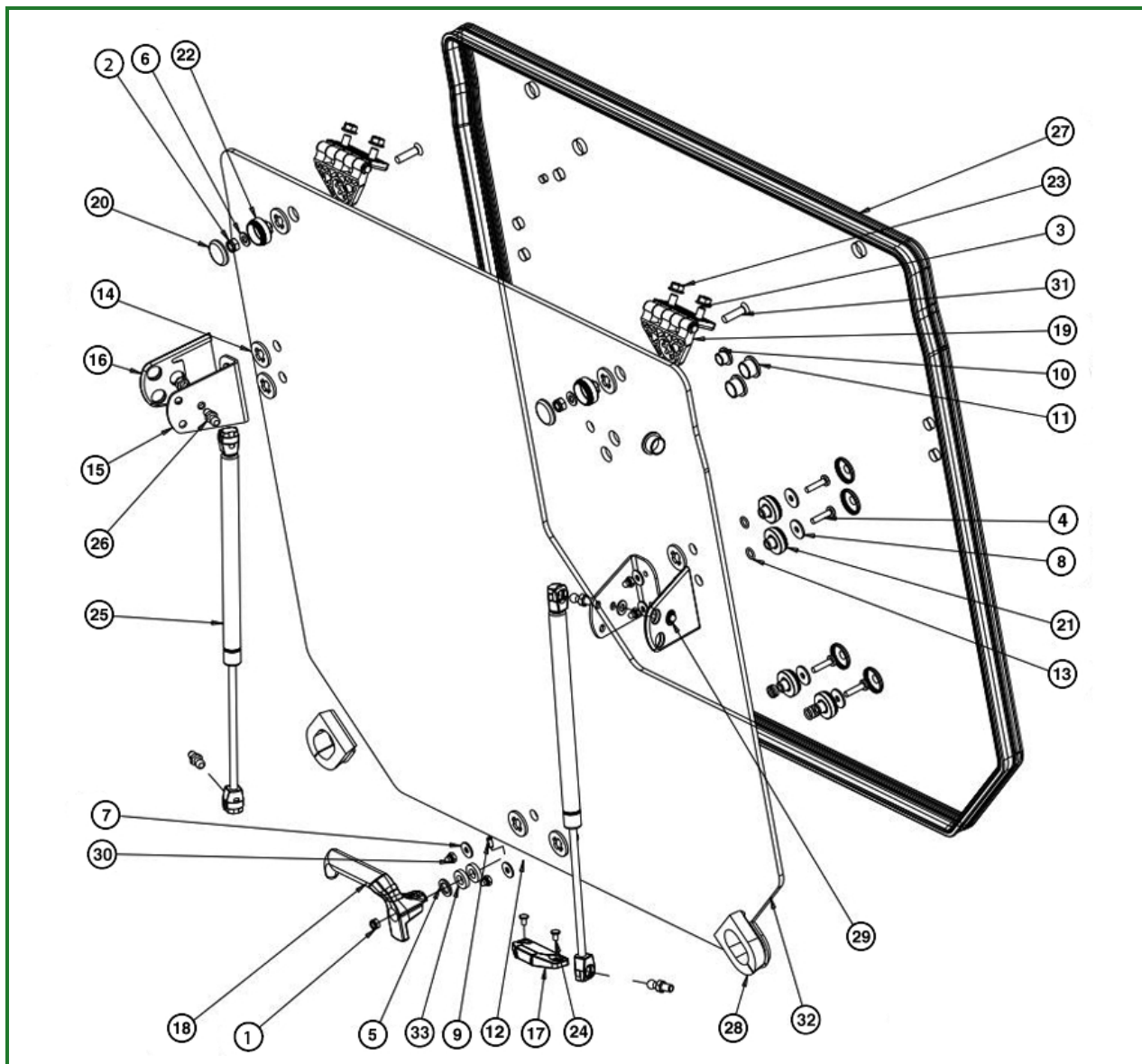


Remove and Install Rear Window



CPA0002290-UN: .

LEGEND:

- 1 - Lock Nut
- 2 - Lock Nut (2 used)
- 3 - Screw (4 used)
- 4 - Screw (6 used)
- 5 - Washer
- 6 - Washer (4 used)
- 7 - Washer (6 used)
- 8 - Washer (6 used)
- 9 - Spring Pin
- 10 - Plug (with Washer)
- 11 - Plug (3 used) (with Washer)
- 12 - Fulcrum
- 13 - O-Ring (6 used)
- 14 - Washer (8 used)
- 15 - Angle (2 used)
- 16 - Cover (2 used)
- 17 - Latch

- 18 - Latch
- 19 - Hinge (2 used)
- 20 - Cap (8 used)
- 21 - Bushing (6 used)
- 22 - Bushing (2 used)
- 23 - Flange Nut (4 used)
- 24 - Rivet (2 used)
- 25 - Gas Operated Cylinder (2 used)
- 26 - Bolt (4 used)
- 27 - Weatherstrip
- 28 - Grommet (2 used)
- 29 - lock Nut (2 used)
- 30 - Lock Nut (6 used)
- 31 - Screw (2 used)
- 32 - Safety Glasses
- 33 - Washer (2 used)

1.

CAUTION:

Prevent crushing injury. Stand on a stable platform to do this job.

IMPORTANT:

Prevent damage to window. A second person is absolutely essential to perform this job.

Disengage two gas operated cylinders (25). Take out screws (31) and lift off rear window.

- 2. Remove lock hardware from bottom of glass.
- 3. When installing a new rear window, arrange hardware as shown and bolt rear window to hinges using hardware (2, 3, 6, 19, 20, 22, 23, and 31).

Go to [Section_90:Group_05](#)

CP00834,0001A3A-19-20160120