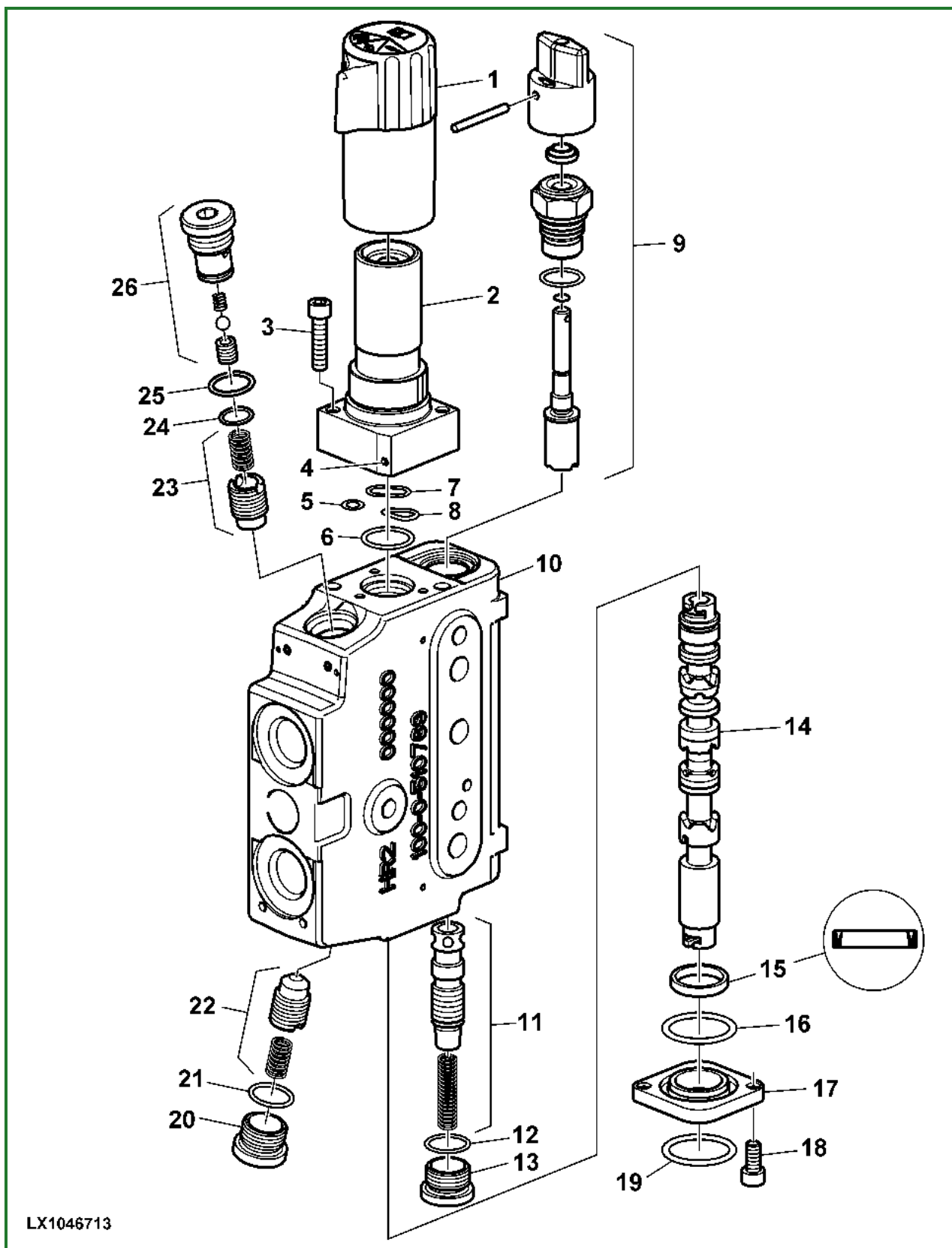


Recondition the Selective Control Valves (SCV 305)



LX1046713

LX1046713-UN: SCV 305, exploded view

LEGEND:

- 1 - Adjusting knob
- 2 - Detent housing
- 3 - Hex. socket screw (2 used)
- 4 - Set screw (automatic detent release)
- 5 - O-ring

- 6 - O-ring
- 7 - O-ring
- 8 - O-ring
- 9 - Flow control valve
- 10 - Valve housing
- 11 - Pressure compensator
- 12 - O-ring
- 13 - Plug
- 14 - Spool
- 15 - Grooved ring
- 16 - O-ring
- 17 - Flange
- 18 - Hex. socket screw (2 used)
- 19 - O-ring
- 20 - Plug
- 21 - O-ring
- 22 - Check valve
- 23 - Check valve
- 24 - O-ring
- 25 - O-ring
- 26 - Plug with check valve

 **CAUTION:**

Comply with the general instructions on safety and reconditioning, see “ Recondition the Selective Control Valves (SCVs) and Couplers - General Instructions on Safety and Reconditioning ” in this Group.

NOTE:

See “ *Remove the Selective Control Valves (SCVs) ” in this Group.*

1. Remove the various parts, clean and inspect them for wear or damage and replace as necessary. Also check the valve seats and bores in valve housing (10) for damage.

If there is damage on:

- Pressure compensator (11), valve housing (10) or spool (14): the entire SCV assembly must be replaced.
- Detent housing (2) or flow control valve (9): both parts must be replaced as assemblies.

2. When assembling, note the following points.
3. Apply clean hydraulic oil to all internal parts before assembling them.
4. The valves must NOT jam in the housing bores.
5. Install detent housing (2).

1. Position O-rings (5 through 8) on the detent housing.