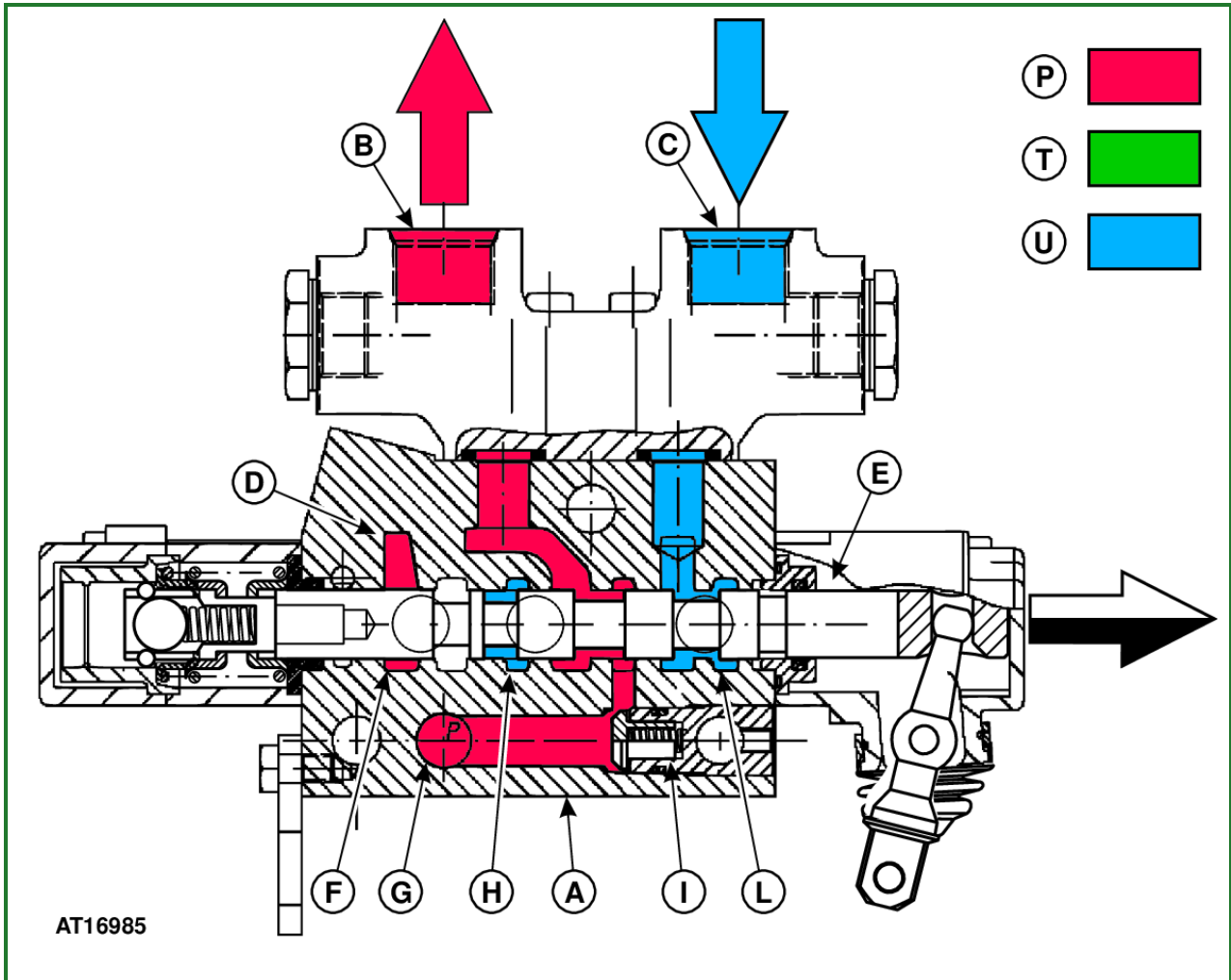
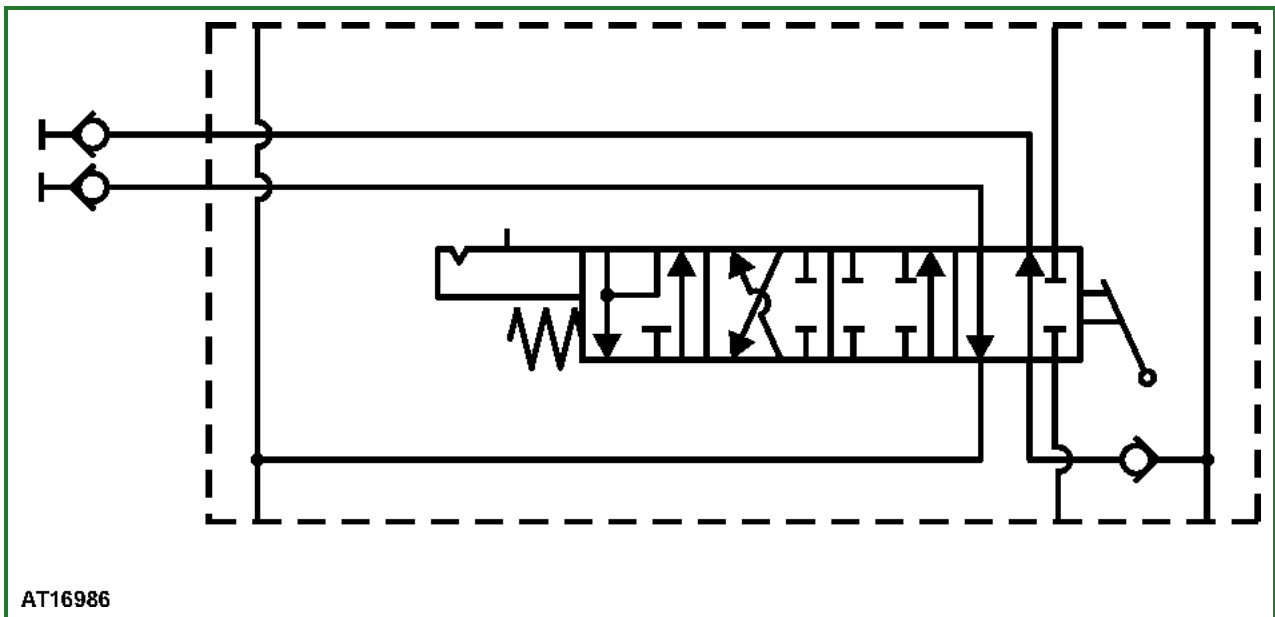


Double-Acting Selective Control Valve – Position 2



AT16985-UN: SCV operation (double-acting) - position 2



AT16986-UN: SCV operation (double-acting) - position 2

LEGEND:

- A - Valve housing
- B - Extend port
- C - Retract port
- D - Neutral passage

- E - Spool
- F - Passage from end cap port
- G - Inlet passage (system pressure)
- H - Sump passage
- I - Check valve
- L - Sump passage
- P - System pressure oil
- T - Trapped oil
- U - Return oil to sump

FUNCTION:

Controls oil supply to cylinders of attached implements.

MAJOR COMPONENTS:

- Selective control valves
- Lever

THEORY OF OPERATION:

When the spool moves to the retract position, neutral passage (D) is blocked, causing the pressure at the inlet passage (G) to rise. Since the inlet passage is connected to retract port (C), the increasing oil pressure opens check valve (I) allowing oil flow to retract port (C).

Oil from extend port (B) is directed to the sump via passage (L).

Go to [Section_270:Group_10](#)

OULXA64,00012AB-19-20050427