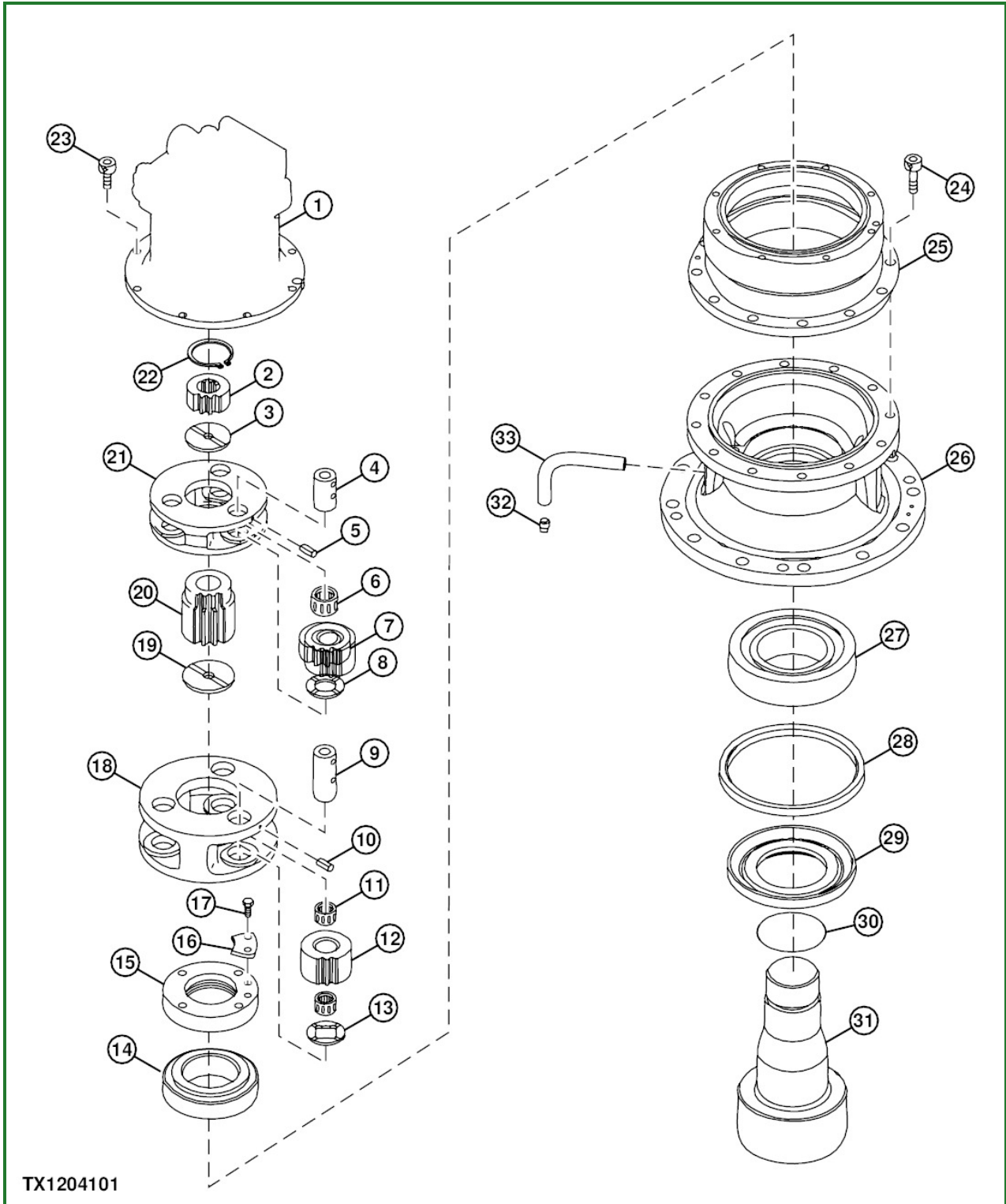


OTHER MATERIAL

Loctite® 242® Threadlocker (medium strength)



TX1204101-UN: Swing Gear Case Disassemble and Assemble

LEGEND:

- 1 - Swing Motor
- 2 - First Stage Sun Gear
- 3 - Thrust Plate
- 4 - Pin (3 used)
- 5 - Spring Pin (3 used)
- 6 - Needle Bearing (3 used)
- 7 - First Stage Planetary Gear (3 used)

- 8 - Thrust Plate (3 used)
- 9 - Pin (3 used)
- 10 - Spring Pin (3 used)
- 11 - Needle Bearing (6 used)
- 12 - Second Stage Planetary Gear (3 used)
- 13 - Thrust Plate (3 used)
- 14 - Upper Roller Bearing
- 15 - Bearing Nut
- 16 - Lock Plate
- 17 - Cap Screw (2 used)
- 18 - Second Stage Carrier
- 19 - Thrust Plate
- 20 - Second Stage Sun Gear
- 21 - First Stage Carrier
- 22 - Retaining Ring
- 23 - Cap Screw (8 used)
- 24 - Ring Gear Cap Screw (12 used)
- 25 - Ring Gear
- 26 - Housing
- 27 - Lower Roller Bearing
- 28 - Seal
- 29 - Sleeve
- 30 - O-Ring
- 31 - Shaft
- 32 - Drain Plug
- 33 - Drain Line

Disassemble Swing Gear Case

1.

CAUTION:

Avoid possible crushing injury from heavy component. Use appropriate lifting device.

Using appropriate lifting device, remove swing gear case assembly. [See Swing Gear Case Remove and Install](#) . (Group 4350.)

Item	Measurement	Specification
Swing Gear Case Assembly	Weight (approximate)	220 kg 485 lb

2. Install ST5097 Stand using M20 x 2.5 cap screws.
3. Remove drain plug (32) and drain oil from swing gear case. See Maintenance—Transmission—Swing Reduction Gear in operator’s manual.

Item	Measurement	Specification
Swing Gear Case Oil	Capacity	6.9 L 1.8 gal