

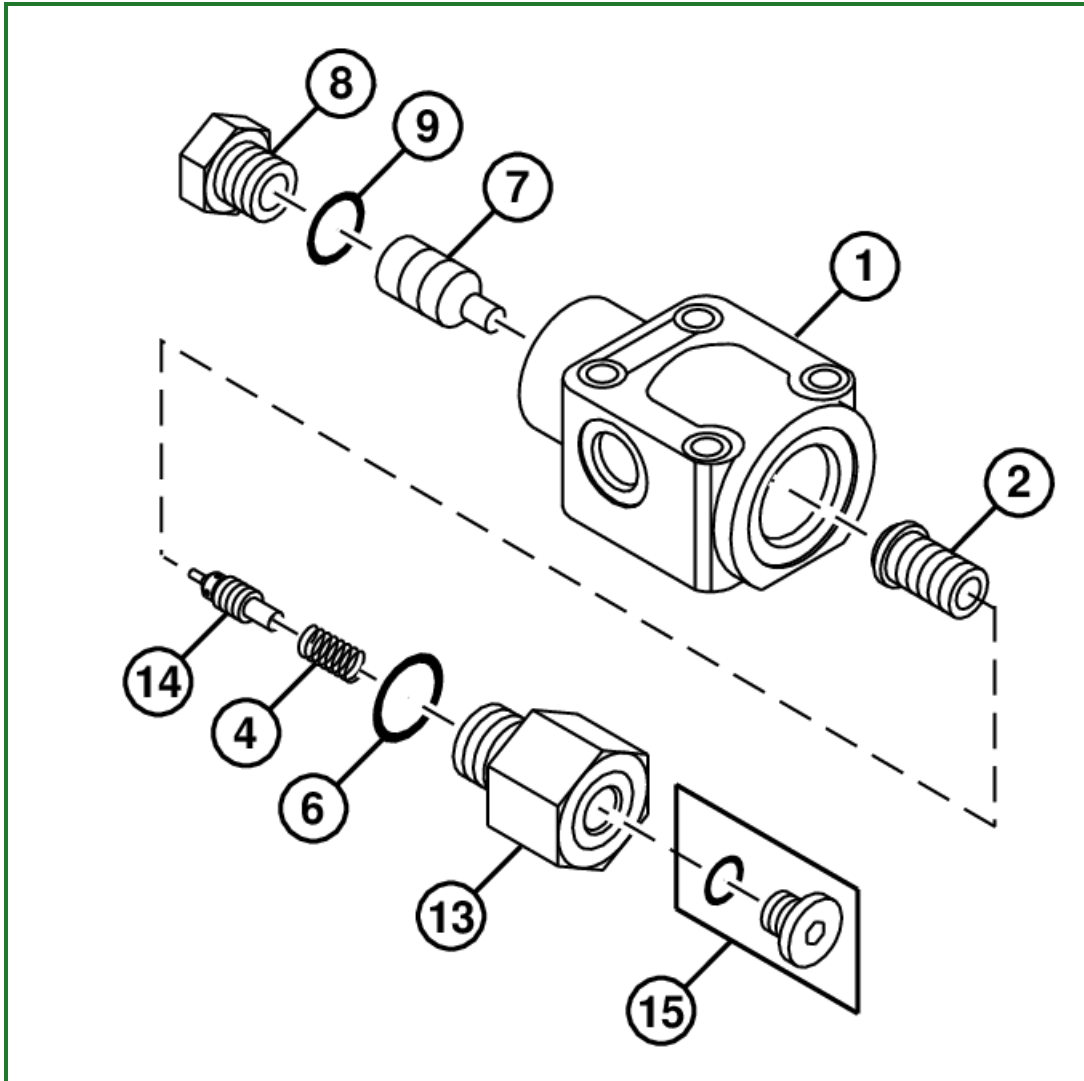
Axle Lock Cylinder Check Valve Disassemble and Assemble

-: Specifications

SPECIFICATIONS	
Axle Lock Cylinder Check Valve Plug Torque	34 N·m 25 lb·ft
Axle Lock Cylinder Check Valve Plug Torque	120 N·m 88 lb·ft
Axle Lock Cylinder Check Valve Plug-to-Plug Torque	2 N·m 18 lb·ft

1. Remove axle lock cylinder check valve. See [Axle Lock Cylinder Check Valve Remove and Install](#) . (Group 3360.)

2.



TX1035258-UN: Axle Lock Cylinder Check Valve

LEGEND:

- 1 - Check Valve Housing
- 2 - Sleeve
- 4 - Spring

- 6 - O-Ring
- 7 - Piston
- 8 - Plug
- 9 - O-Ring
- 13 - Plug
- 14 - Poppet
- 15 - Plug

Remove plug (15).

3. Remove plug (13), spring (4), poppet (14), and sleeve (2).
4. Remove plug (8) and piston (7).
5. Inspect and replace parts as necessary.
6. Apply clean hydraulic oil to parts.
7. Install piston (7), O-ring (9), and plug (8) into check valve housing (1). Tighten plug (8) to specification.

Item	Measurement	Specification
Axle Lock Cylinder Check Valve Plug	Torque	34 N·m 25 lb·ft

8. Install sleeve (2), poppet (14), spring (4), O-ring (6), and plug (13) into housing (1). Tighten plug (13) to specification.

Item	Measurement	Specification
Axle Lock Cylinder Check Valve Plug	Torque	120 N·m 88 lb·ft

9. Install plug (15) into plug (13). Tighten plug (15) to specification.

Item	Measurement	Specification
Axle Lock Cylinder Check Valve Plug-to-Plug	Torque	2 N·m 18 lb·ft

10. Install check valve onto axle lock cylinder. [See Axle Lock Cylinder Check Valve Remove and Install](#) . (Group 3360.)

[Go to Section_33:Group_3360](#)

JS20420,00010E5-19-20180619