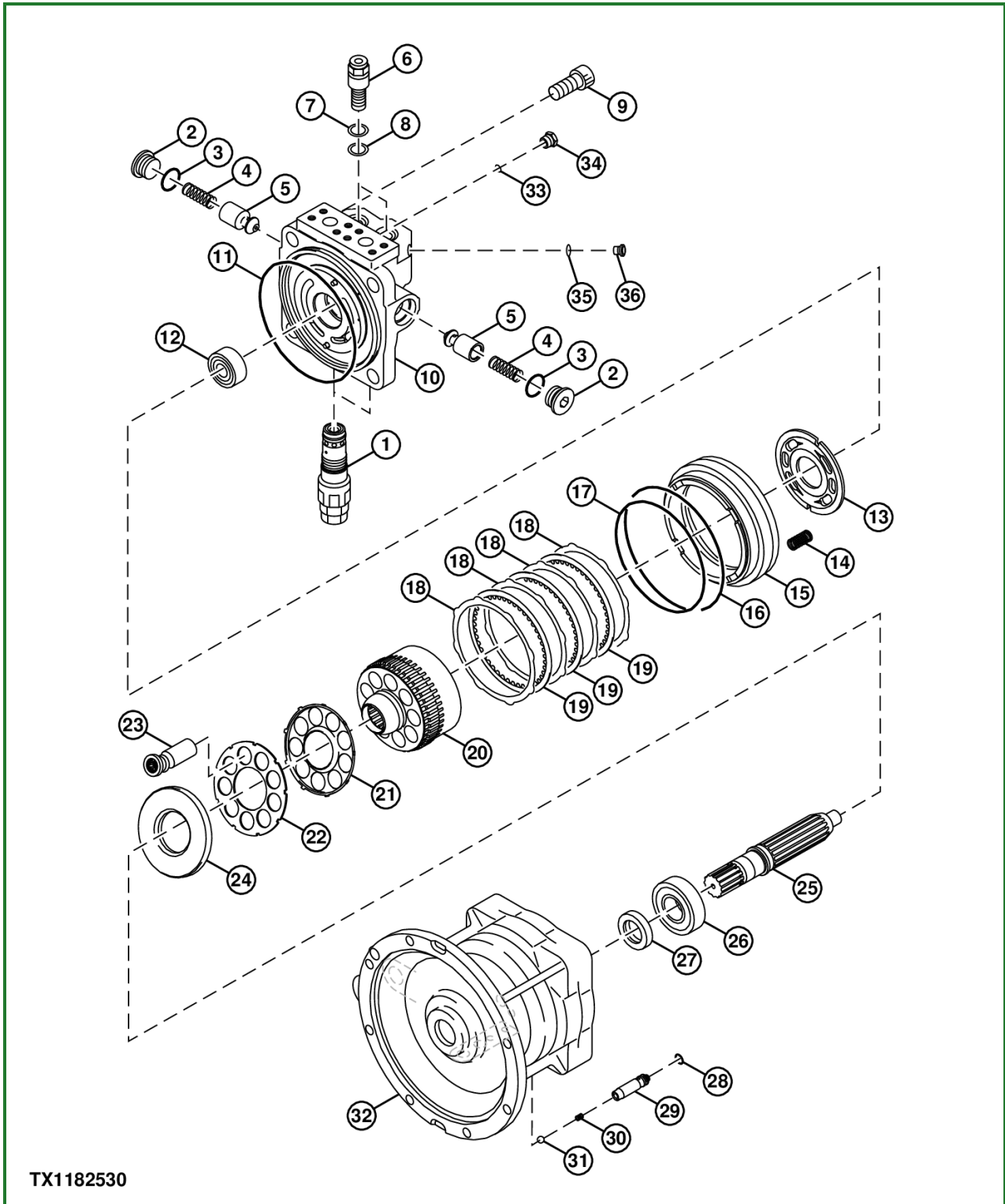


Swing Motor and Park Brake Assemble



TX1182530

TX1182530-UN: Swing Motor and Park Brake

LEGEND:

- 1 - Crossover Relief Valve (2 used)
- 2 - Make-Up Check Valve Plug (2 used)
- 3 - O-Ring (2 used)
- 4 - Spring (2 used)
- 5 - Poppet (2 used)
- 6 - Damper Valve (2 used)
- 7 - Back-Up Ring (2 used)
- 8 - Packing (2 used)

- 9 - Cap Screw (4 used)
- 10 - Park Brake Valve Casing
- 11 - O-Ring
- 12 - Roller Bearing
- 13 - Valve Plate
- 14 - Spring (24 used)
- 15 - Brake Piston
- 16 - O-Ring
- 17 - O-Ring
- 18 - Plate (4 used)
- 19 - Friction Plate (3 used)
- 20 - Rotor
- 21 - Retainer
- 22 - Plate
- 23 - Plunger (9 used)
- 24 - Shoe Plate
- 25 - Shaft
- 26 - Roller Bearing
- 27 - Oil Seal
- 28 - O-Ring
- 29 - Piston
- 30 - Spring
- 31 - Ball
- 32 - Swing Motor Gear Case
- 33 - O-Ring (2 used)
- 34 - Plug (2 used)
- 35 - O-Ring (2 used)
- 36 - Plug (2 used)

-: Specifications

SPECIFICATIONS	
Valve Casing Cap Screw Torque	430 N·m 320 lb.-ft.
Damper Valve Torque	65 N·m 48 lb.-ft.
Make-Up Check Valve Plug Torque	340 N·m 250 lb.-ft.
Crossover Relief Valve Torque	180 N·m 133 lb.-ft.

1. Install inner race of bearings (26 and 12) to shaft (25) using press.
2. Install oil seal (27) to swing motor gear case (32).
3. Install outer race of bearing (26) to case.
4. IMPORTANT:

Prevent possible oil seal damage. When torque around shaft online during installation