

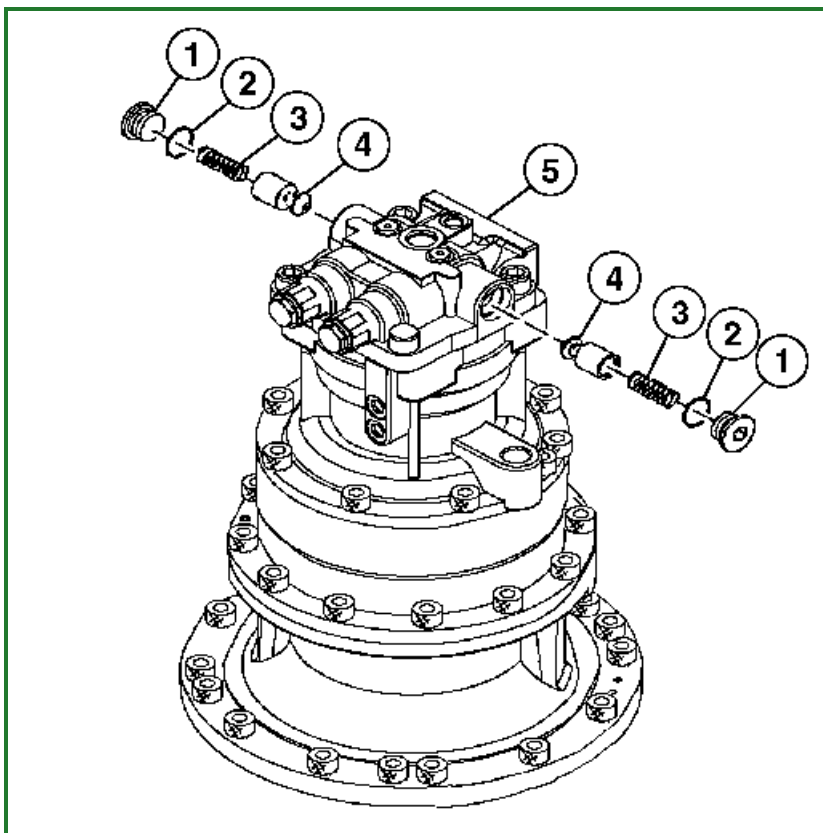
## Make-Up Check Valve Disassemble and Assemble

-: Specifications

SPECIFICATIONS	
Make-Up Check Valve Torque	334 N·m 245 lb.-ft.

1. Park and prepare machine for service. [See Practice Safe Maintenance](#) . (Group 0001.)
2. Remove make-up check valves from swing motor and park brake (5). [See Crossover Relief Valve and Make-Up Check Valve Remove and Install](#) . (Group 4360.)

3.



**TX1113765-UN: Make-Up Check Valve**

**LEGEND:**

- 1 - Make-Up Check Valve Plug (2 used)
- 2 - O-Ring (2 used)
- 3 - Spring (2 used)
- 4 - Poppet (2 used)
- 5 - Swing Motor and Park Brake

Inspect O-rings (2), springs (3), and poppets (4) for wear and damage.

4. Replace parts as necessary.
5. Install O-rings, springs, poppets, and make-up check valve plugs (1).
6. Tighten make-up check valve plugs to specification. [See Crossover Relief Valve and Make-Up Check Valve Remove and Install](#) . (Group 4360.)

Item	Measurement	Specification
Make-Up Check Valve	Torque	334 N·m 245 lb.-ft.

Go to [Section\\_43:Group\\_4360](#)

DB95148,0002222-19-20140820