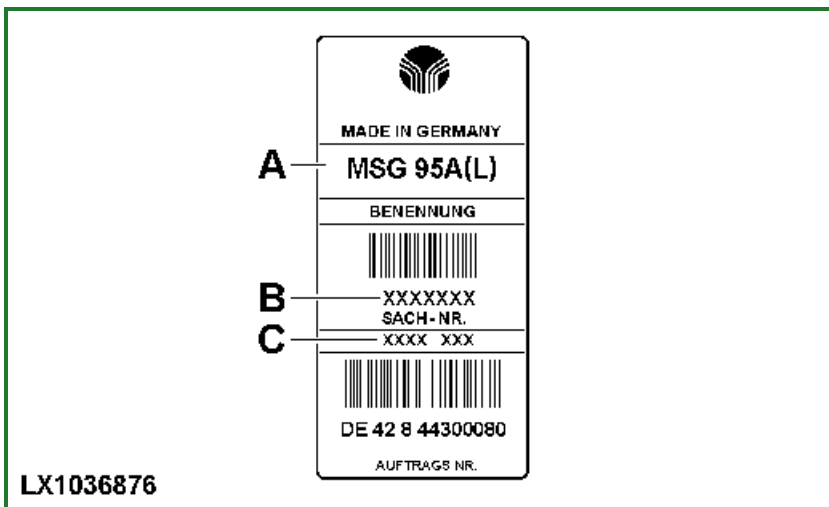


Serial Number of Operator's Seat



LX1033432-UN: Serial Number of Operator's Seat



LX1036876-UN: Type plate

LEGEND:

A - Designation

B - Part Number (needed when ordering)

C - Date of Manufacture (Year - Week)

The serial number of the operator's seat is located on the back of the seat.

Explanation of serial number plate field C:

The first two digits (XXxx xx) indicate the year of manufacture.

Third and fourth digits (xxXX xx) indicate the week of manufacture.

OULXA64,00026AB-19-20101202

Sub-Assembly Serial Numbers

Fuel injection pump, fuel injection nozzles, alternator, starting motor, steering unit (hydrostatic steering system), air conditioning system compressor (if equipped) and the hydraulic pump also have serial numbers. These numbers help to distinguish between the different types of a sub-assembly.

OULXA64,00026AC-19-20101201