

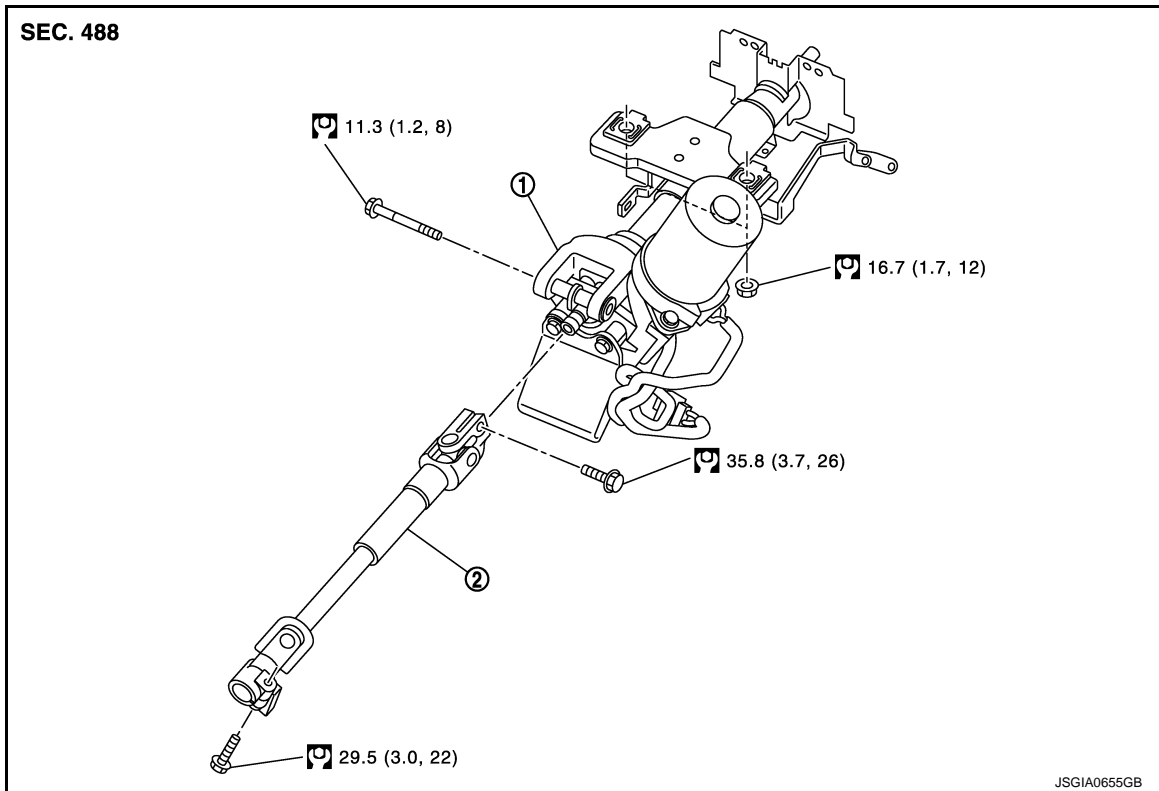
STEERING COLUMN

< REMOVAL AND INSTALLATION >

STEERING COLUMN

Exploded View

INFOID:000000009949817



1. Steering column assembly 2. Intermediate shaft

Refer to [GI-4, "Components"](#) for symbols in the figure.

Removal and Installation

INFOID:000000009949818

REMOVAL

CAUTION:

- Never impact on the axis when removing steering column assembly.
- Place a matching mark on both intermediate shaft and steering column assembly before removing intermediate shaft.
- Never repeat static steering. (Motor and EPS control unit could be heated.)
- Be careful when removing steering column assembly from the vehicle because it is heavy.
- Keep steering column assembly away from magnetic sources.
- Never disassemble steering column assembly. It is not separable.

1. Set vehicle to the straight-ahead position.
2. Place the tilt to the lowest level.
3. Remove instrument lower panel LH. Refer to [IP-13, "Exploded View"](#).
4. Remove knee protector.
5. Remove driver air bag module. Refer to [SR-11, "Exploded View"](#).
6. Remove steering wheel. Refer to [ST-9, "Exploded View"](#).
7. Remove steering column cover. Refer to [IP-13, "Exploded View"](#).
8. Remove spiral cable. Refer to [SR-14, "Exploded View"](#).
9. Remove combination switch. Refer to [BCS-89, "Exploded View"](#) (with intelligent key system), [BCS-156, "Exploded View"](#) (without intelligent key system).
10. Disconnect each switch harness connectors installed to steering column assembly.

STEERING COLUMN

< REMOVAL AND INSTALLATION >

11. Remove the intermediate shaft mounting bolt (steering gear side).

CAUTION:

- Place a matching mark on both intermediate shaft and steering gear assembly before removing intermediate shaft.
- When removing intermediate shaft, never insert a tool, such as a screwdriver, into the yoke groove to pull out the intermediate shaft. In case of the violation of the above, replace intermediate shaft with a new one.

12. Remove steering column assembly.

13. Remove brake pedal. Refer to [BR-17, "Exploded View"](#).

14. Separate the intermediate shaft from steering column assembly.

CAUTION:

- Place a matching mark on both intermediate shaft and steering column assembly before removing intermediate shaft.
- When removing intermediate shaft, never insert a tool, such as a screwdriver, into the yoke groove to pull out the intermediate shaft. In case of the violation of the above, replace intermediate shaft with a new one.

INSTALLATION

CAUTION:

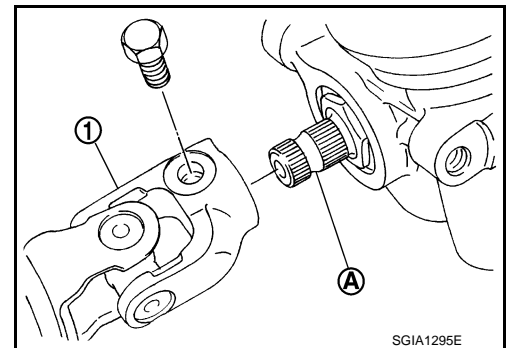
- Never impact on the axis when removing steering column assembly.
- Be careful when removing steering column assembly from the vehicle because it is heavy.

Note the following, and install in the reverse order of removal.

- Insert bolt in the proper direction. (Do not insert it from the other side.)
- When connecting intermediate shaft lower side and pinion assembly, make sure the bolt is securely seated in groove of pinion assembly before final tightening.
- When tightening bolt (steering gear assembly side), tighten it by hand first, and make sure there is no feeling of sticking or galling before final tightening.
- When connecting intermediate shaft upper side (1) and column shaft, make sure the bolt is securely seated in groove (A) of column shaft (A) before final tightening.

CAUTION:

- After installing steering column assembly, perform self-diagnosis with CONSULT to ensure correct operation. Refer to [STC-9, "CONSULT Function"](#).
- Rotate steering wheel to check for decentered condition, binding, noise or excessive steering effort.
- Adjust neutral position of steering angle sensor. Refer to [BRC-9, "Description"](#).



Inspection

INFOID:000000009949819

INSPECTION AFTER REMOVAL

- Check each part of steering column assembly for damage or other malfunctions. Replace if there are any abnormal conditions.
- Measure steering column assembly rotating torque using a preload gauge (A) [SST: ST3127S000 (J-25765-A)]. Replace steering column assembly if the rotating torque is outside the standard.

Rotating torque

: Refer to [ST-20, "Steering Column Operating Range"](#).

