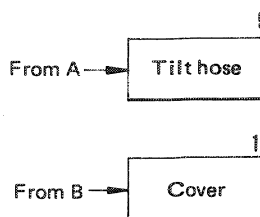
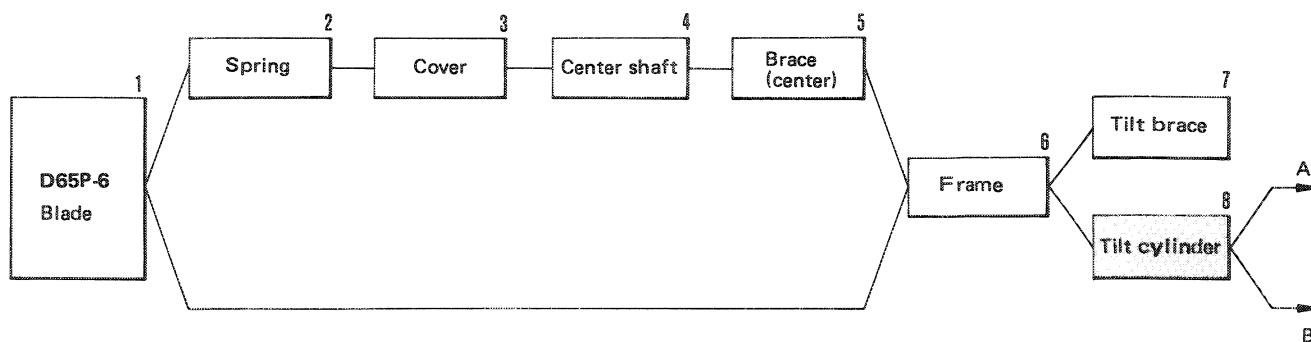


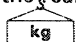
ASSEMBLY OF BLADE

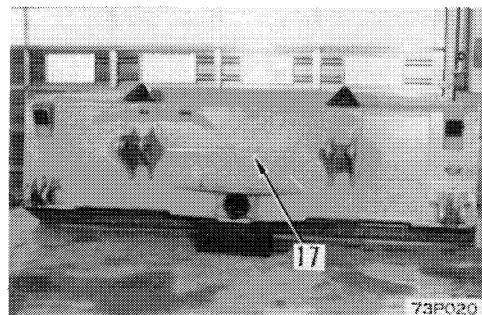


73F004

1. Blade

Support blade with approx. 230 mm high block placed under the rear center of blade (17).

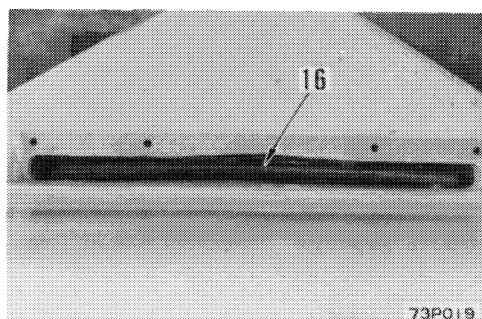
 Blade only: 1250 kg



2. Spring

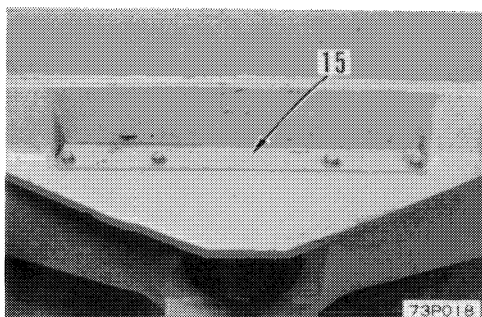
Install spring (16).

★ Face outside curve of spring to center shaft.



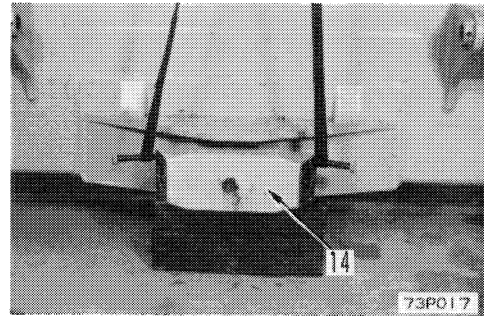
3. Cover

Install cover (15).

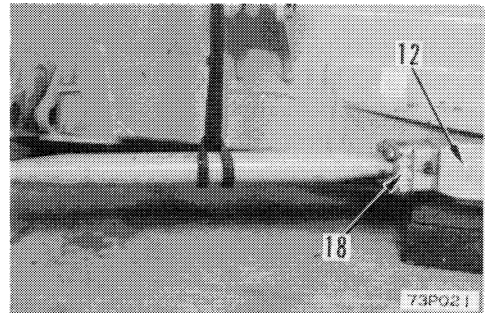
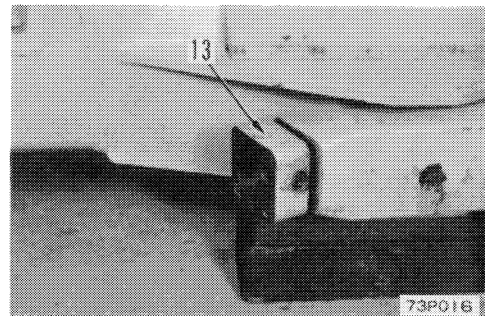


4. Center shaft

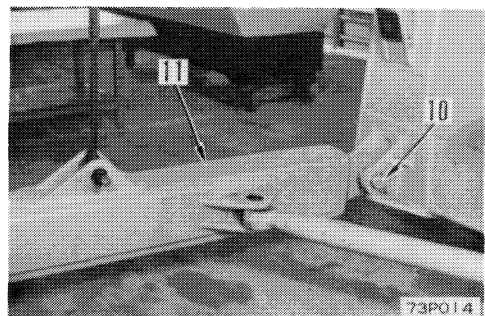
Install shaft (14).

**5. Center brace**

- 1) Install retainer (13) with its grease fitting facing rearward.
- 2) Hoist and position center brace (12) in place.
- 3) Insert 16 mm thick shims between retainer (inner) (13) and shaft (14).
- 4) Insert 3 mm thick shims between retainer (outer) (18) and inner (13) retainer.
- 5) Tighten bolts.

**6. Frame**

- 1) Hoisting frame (11), insert center brace into center brace mounting bracket and install frame and blade with shaft (10).



- 2) Install center brace and frame with shaft (9).
- 3) After installing, place block under frame so that the center of trunnion mounting portion is off 400 mm above the ground.

