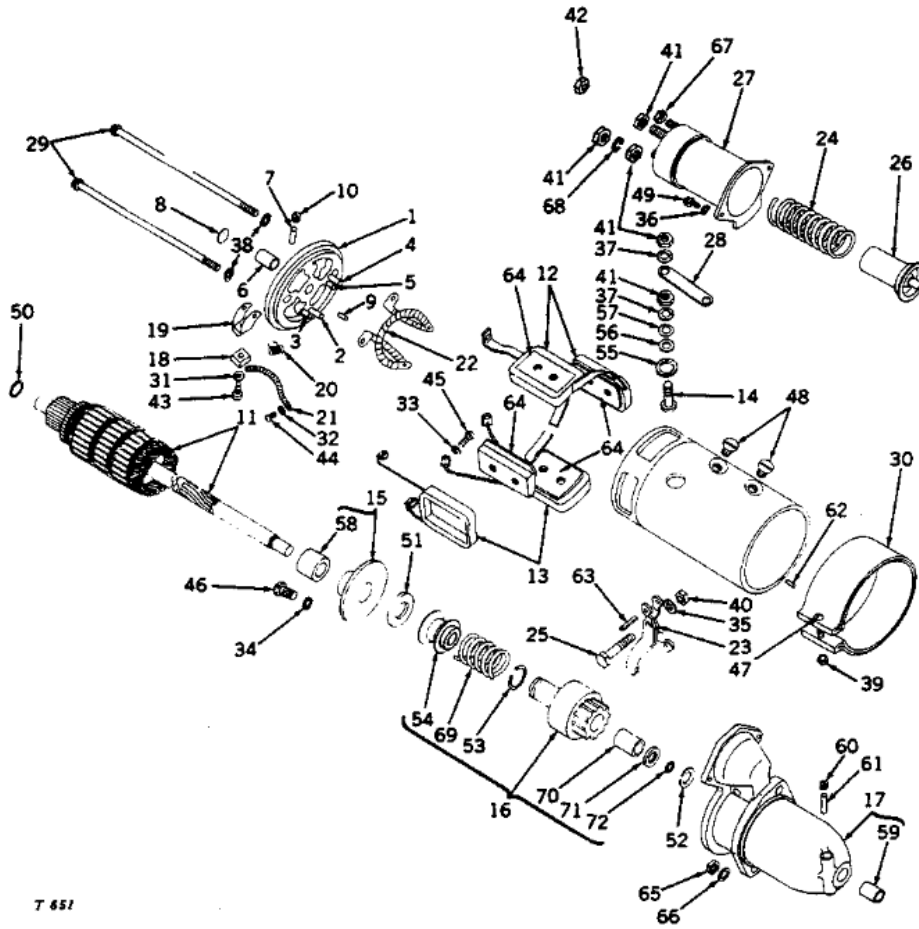


85-8

Tractor -- 435 Diesel

**STARTING MOTOR**  
Delco-Remy No. 1108656



T 651

Key	Part No.	Serial No.	Description
1	AT 11344 T	( - )	Commutator end frame and pin assembly
2	R 11092 R	( - )	Pin, brush hinge (2 used)
3	R 11093 R	( - )	Pin, brush holder stop (2 used)
4	AR 11063 R	( - )	Pin, brush holder hinge and insulator (2 used)
5	AR 11062 R	( - )	Pin, brush holder stop and insulator (2 used)

PC-642-(10-63) Litho in U. S. A.

## Tractor -- 435 Diesel

85-9

STARTING MOTOR -- Continued  
Delco-Remy No. 1108656

Key	Part No.	Serial No.	Description
6	T 10794 T	( - )	Bushing, commutator end
7	H 23193 H	( - )	Wick, commutator end
8	30H 9 A	( - )	End, plug, commutator end
9	R 11086 R	( - )	Pin, dowel, commutator end
10	R 11085 R	( - )	Plug, pipe, commutator end
11	AT 11341 T	( - )	Armature
12	AT 11343 T	( - )	Field coil, upper
13	AT 11345 T	( - )	Field coil, lower
14	H 23194 H	( - )	Stud, terminal
15	T 11683 T	( - )	Plate, center bearing
16	AT 11346 T	( - )	Motor, drive
17	T 11685 T	( - )	Housing, drive
18	T 11678 T	( - )	Brush (4 used) (packed 4 in a pkg.)
19	R 11090 R	( - )	Holder, brush (4 used)
20	R 11091 R	( - )	Spring, brush (4 used)
21	AR 11064 R	( - )	Lead, brush ground (2 used)
22	AR 11065 R	( - )	Lead, brush jumper
23	T 11674 T	( - )	Shift lever
24	T 11675 T	( - )	Spring, plunger, return
25	T 11672 T	( - )	Screw, shift lever
26	AT 15147 T	( - )	Plunger, solenoid switch (sub. for T11673T)
27	AT 11342 T	( - )	Switch, solenoid
28	T 11676 T	( - )	Connector, switch
29	T 11681 T	( - )	Bolt, thru (2 used)
30	AR 11066 R	( - )	Band, cover
31	H 23191 H	( - )	Washer, lock, No. 8 (4 used) (sub. for A2734R)
32	12H 290 A	( - )	Washer, lock, internal tooth, No. 8 (2 used)
33	12H 246 A	( - )	Washer, lock, No. 10 (2 used) (sub. for A767R)
34	H 23195 H	( - )	Washer, lock, special (2 used)
35	12H 303 A	( - )	Washer, lock, 5/16"
36	T 11679 T	( - )	Washer, lock, special (2 used) (packed 2 in a pkg.)
37	12H 304 A	( - )	Washer, lock, 3/8" (2 used)
38	12H 302 A	( - )	Washer, lock, 1/4" (2 used)
39	14H 631 A	( - )	Nut, cover band
40	14H 611 A	( - )	Nut, special (sub. for T11682T)
41	14H 732 A	( - )	Nut, hex., 3/8" (2 used)
42	14H 732 A	( - )	Nut, hex., 3/8"
43	21H 964 A	( - )	Screw, mach., No. 6 x 1/2" (4 used)
44	21H 969 A	( - )	Screw, mach., No. 8 x 1/4" (2 used)
45	21H 1189 A	( - )	Screw, mach., No. 10 x 1/4" (2 used)
46	H 23192 H	( - )	Screw, special (2 used)
47	21H 986 A	( - )	Screw, mach., No. 10 x 1-1/4"
48	R 11104 R	( - )	Screw, pole shoe (8 used)
49	21H 1142 A	( - )	Screw, mach., 1/4" x 1/2" (2 used) (sub. for T11670T)
50	R 11096 R	( - )	Washer, spacer
51	R 11095 R	( - )	Washer, brake
52	R 11080 R	( - )	Washer, spacer
53	R 11118 R	( - )	Sub. AT11346T
54	T 12209 T	( - )	Sub. AT11346T
55	R 11107 R	( - )	Washer, insulated terminal stud, 9/16" O.D. (2 used)
56	R 11099 R	( - )	Washer, insulated terminal stud, 25/64" O.D. (2 used)
57	24H 1303 A	( - )	Washer, plain, 13/32" x 11/16" x .060"
58	T 11684 T	( - )	Bushing, center bushing
59	T 17987 T	( - )	Bushing, drive, end (sub. for T11677T)
60	R 11085 R	( - )	Pipe, plug, drive, end
61	R 11108 R	( - )	Wick, drive, end
62	R 11087 R	( - )	Pin, dowel, drive, end
63	34H 74 A	( - )	Pin, shift lever (sub. for T11671T)
64	T 11680 T	( - )	Shoe, pole (4 used)
65	14H 732 A	( - )	Nut, hex., 3/8"
66	24H 1303 A	( - )	Washer, plain, 13/32" x 11/16" x .060"
67	14H 605 A	( - )	Nut, hex., no. 8
68	12H 304 A	( - )	Washer, lock, 3/8"
69	T 12208 T	( - )	Sub. AT11346T
70	R 11119 R	( - )	Sub. AT11346T
71	R 11116 R	( - )	Collar
72	R 11117 R	( - )	Ring, retaining
..	AT 11299 T	( - )	Sub. AT15336T starting motor, complete