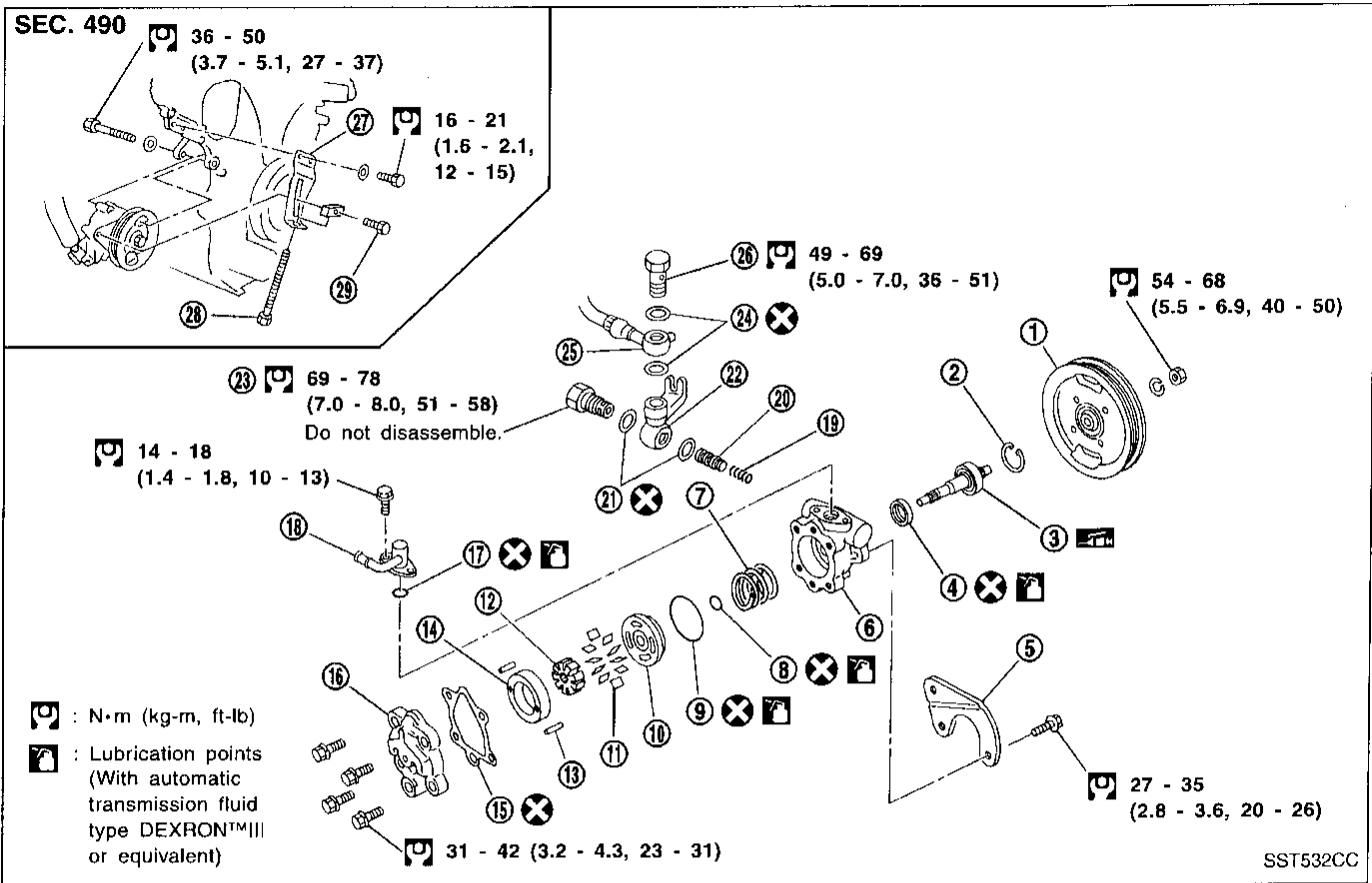
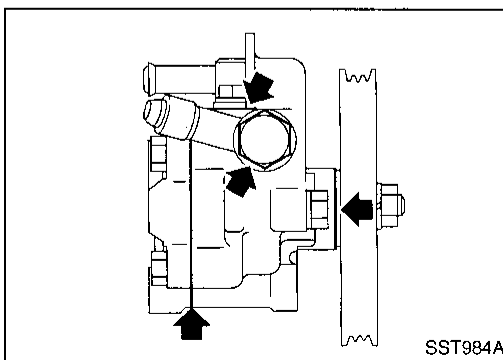


POWER STEERING OIL PUMP



- | | | |
|------------------------|-----------------|---------------------|
| ① Pulley | ⑪ Vane | ⑳ Copper washer |
| ② Snap ring | ⑫ Rotor | ㉑ Joint |
| ③ Drive shaft assembly | ⑬ Pin | ㉒ Connector |
| ④ Oil seal | ⑭ Cam ring | ㉓ Copper washer |
| ⑤ Bracket | ⑮ Gasket | ㉔ Hose |
| ⑥ Front housing | ⑯ Rear housing | ㉕ Eye bolt |
| ⑦ Spring | ⑰ O-ring | ㉖ Adjusting bracket |
| ⑧ O-ring (Inner) | ⑱ Suction pipe | ㉗ Adjusting bolt |
| ⑨ O-ring (Outer) | ㉀ Spring | ㉘ Lock bolt |
| ⑩ Front side plate | ㉁ Control valve | |



Pre-disassembly Inspection

Disassemble the power steering oil pump only if the following items are found.

- Oil leak from any point shown in the figure
- Deformed or damaged pulley
- Poor performance

POWER STEERING OIL PUMP

Disassembly

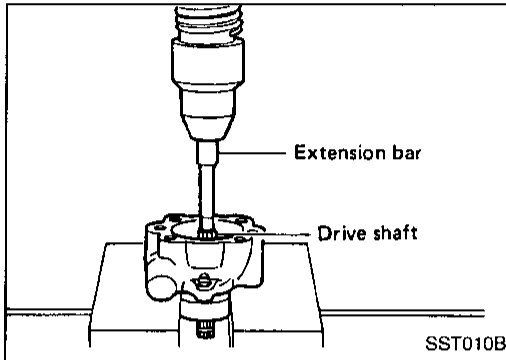
CAUTION:

- Parts which can be disassembled are strictly limited. Never disassemble parts other than those specified.
- Disassemble in as clean a place as possible.
- Clean your hands before disassembly.
- Do not use rags; use nylon cloths or paper towels.
- Follow the procedures and cautions in the Service Manual.
- When disassembling and reassembling, do not let foreign matter enter or contact the parts.

GI

MA

EM



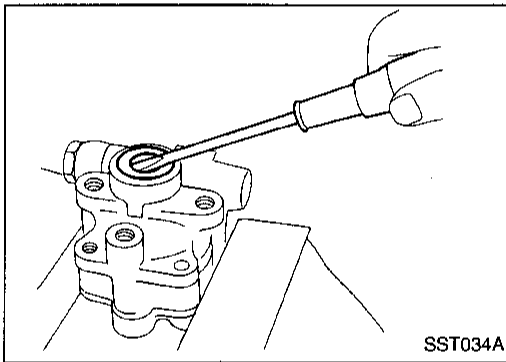
- Remove snap ring, then draw drive shaft out.
Be careful not to drop drive shaft.

LC

EC

FE

CL



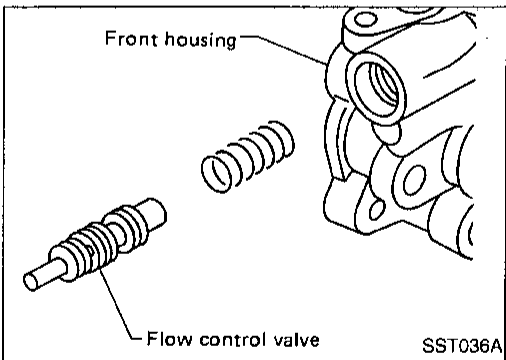
- Remove oil seal.
Be careful not to damage front housing.

MT

AT

FA

RA



- Remove connector.
Be careful not to drop flow control valve.

BR

ST

RS

BT

HA

Inspection

Inspect each component part for wear, deformation, scratches and cracks. If damage is found, replace the part.

EL

IDX