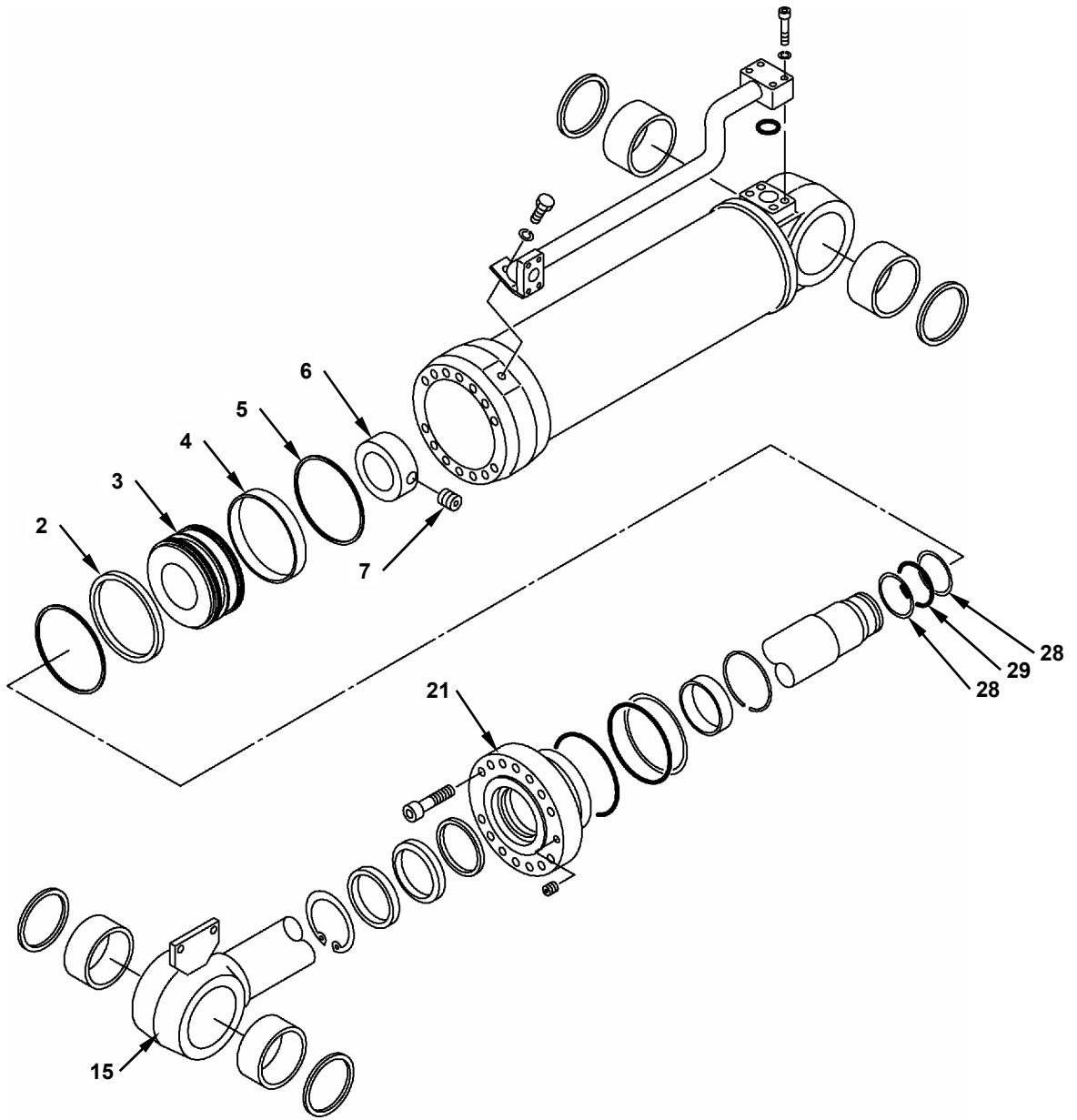


# FRONT ATTACHMENT / Cylinder



W4GB-04-02-001

## FRONT ATTACHMENT / Cylinder

- Secure the parallel surface of the piston rod (15) assembly in order not to move.

**IMPORTANT: Do not secure the chromium plated surface of piston rod (15). Secure at the rod head part.**

- Remove set screw (7) from piston nut (6).

**IMPORTANT: As set screw (7) is crimped at the piston nut (6) side (2 places), remove set screw (7) slowly by applying oil onto the thread part and repeating "loosening and screwing."**

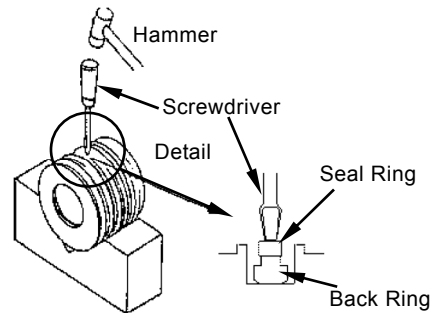
- Remove piston nut (6) from piston rod (15) by using a special tool.  
Special tool: Refer to W3-9-22.

- Install a bolt (M12, Pitch 1.75 mm) to the end of piston nut (6) (2 places). Remove piston nut (6) from piston rod (15) by using a special tool.  
Special tool: Refer to W3-9-22.

- Remove rod cover (21) from piston rod (15).

- Remove wear ring (4) and O-ring (5) from piston (3).

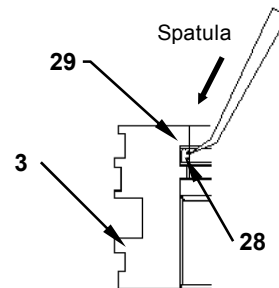
- Remove the backup ring on both sides of packing (2) from piston (3).  
Cut and remove center packing (2) (seal ring and back ring) as shown in the following figure.



W4GB-04-02-004

**IMPORTANT: When cutting packing (2), place piston (3) on a stable V-block. Do not damage the seal groove by a cut-off tool.**

- Remove O-ring (29) and backup rings (28) (2 used) in the ID part of piston (3) by using a spatula.



W4GB-04-02-005