

Slow Return Valve

SMCS - 5129-010

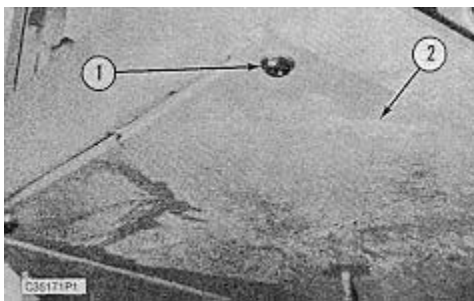
Remove & Install Slow Return Valve

NOTE: The counterweight is removed from the machine for better photo illustration of the slow return valve which is located next to the hydraulic oil cooler, on the left side of the machine. Access to the slow return valve can be made through the left rear engine access door and from under the machine.



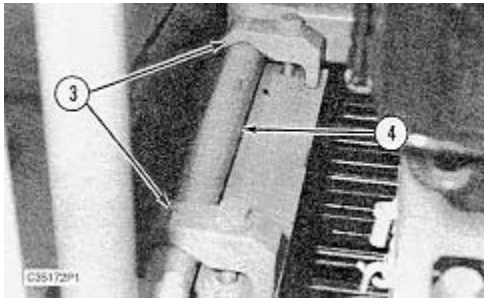
At operating temperature, the hydraulic oil tank is hot and under pressure. Hot oil can cause burns. Remove the fill plug only when the engine is stopped, and the fill plug is cool enough to touch with your bare hand.

1. Release the pressure in the hydraulic oil tank by slowly loosening the pressure cap located on the side of the tank.



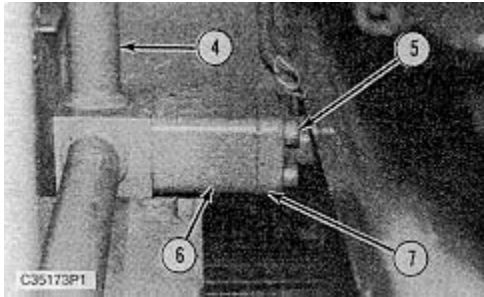
View From Under Machine

2. Remove four bolts (1) and cover (2) located under the radiator and hydraulic oil cooler.



View From Rear Of Machine

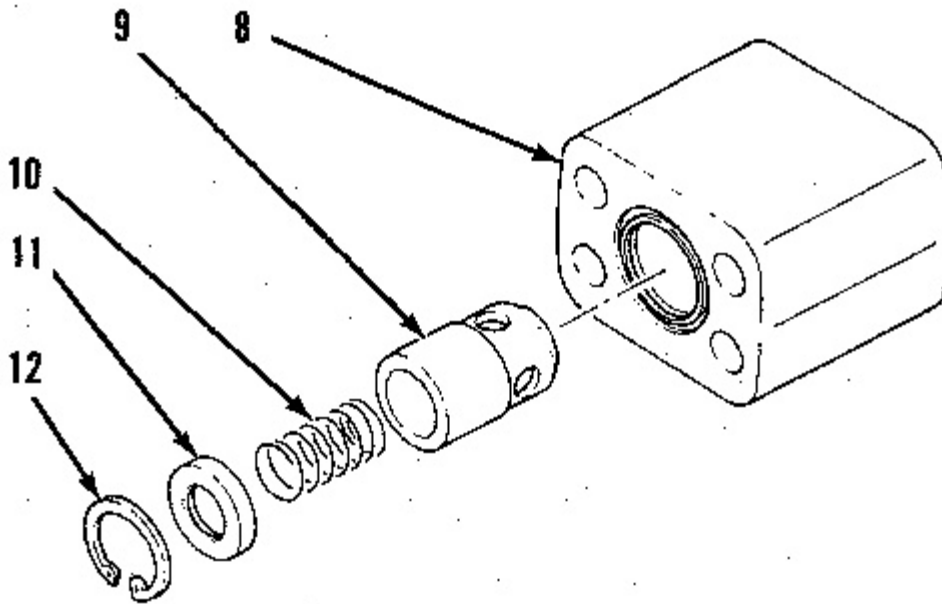
3. Remove two clamps (3) that hold pipe (4) in position. Pipe (4) is located directly in front of the hydraulic oil cooler.



View From Rear Of Machine

4. Remove the four socket head bolts (5) that hold pipe (7) and pipe (4) to the body of the slow return check valve.

5. Remove slow return valve (6). Remove the o-ring seal from each side of the slow return valve.



6. Disassemble the slow return valve. Remove snap ring (12), retainer (11), spring (10) and poppet (9) from valve body (8).