

Specifications

317 AND 317N EXCAVATORS ATTACHMENTS

Media Number -SEN8999-00

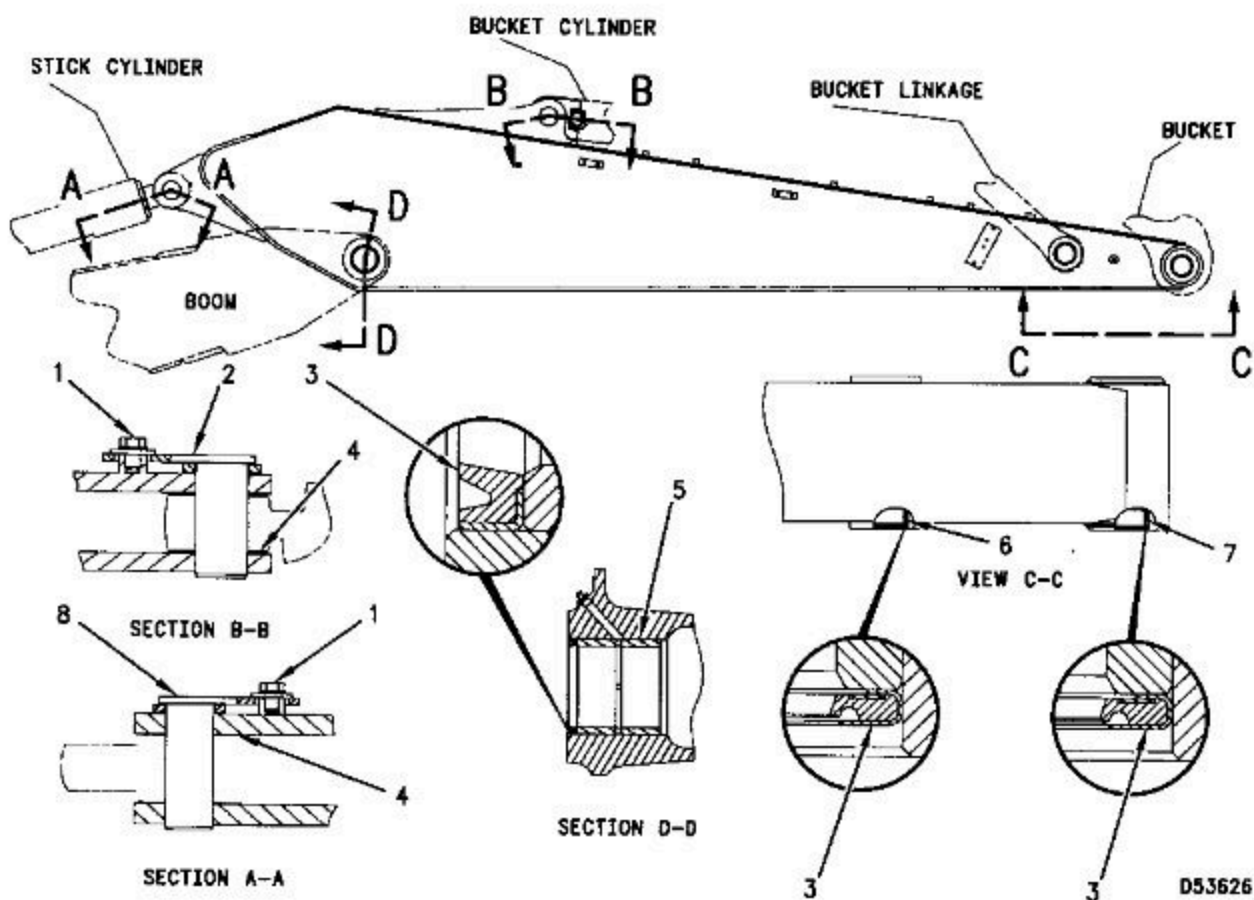
Publication Date -04/03/1996

Date Updated -12/10/2001

Stick Groups

SMCS - 5050

129-0978 (Extra Long)



NOTE: All bores must be free of paint. Coat all bores for pins with lubricant including bucket and cylinder pin bores.

Torque two bolts to ... 325 ± 40 N·m (240 ± 30 lb ft)

(2) 107-9852 Pin Assembly:

Diameter after plating ... 69.850 ± 0.025 mm ($2.7500 \pm .0015$ in)

Minimum plating thickness ... 0.005 mm (.0002 in)

Bore diameter for pin ... 70.037 ± 0.037 mm ($2.7574 \pm .0015$ in)

(3) Lubricate sealing lip lightly with lubricant being sealed.

(4) Use shims as required to adjust lateral clearance to a maximum of ... 1.0 mm (.04 in)

093-0086 Shim thickness ... 1.0 mm (.04 in)

7Y-2496 Shim thickness ... 1.6 mm (.06 in)

093-0118 Shim thickness ... 2.0 mm (.08 in)

(5) 7Y-2396 Bearing:

Outside diameter ... 106.200 ± 0.013 mm ($4.1811 \pm .0005$ in)

Inside diameter ... 90.27 ± 0.02 mm ($3.554 \pm .001$ in)

Install bearing in bore (two places) ... 9.5 ± 0.8 mm ($.37 \pm .03$ in)

(6) 7Y-2395 Bearing:

Outside diameter ... 85.160 ± 0.013 mm ($3.3528 \pm .0005$ in)

Inside diameter ... 70.23 ± 0.02 mm ($2.765 \pm .001$ in)

Install bearing in bore (two places) ... 7.5 ± 0.8 mm ($.30 \pm .03$ in)

(7) 107-9845 Bearing:

Outside diameter ... 85.106 ± 0.013 mm ($3.3528 \pm .0005$ in)

Inside diameter ... 7.023 ± 0.02 mm ($2.765 \pm .001$ in)

Install bearing in bore (two places) ... 7.5 ± 0.8 mm ($.30 \pm .03$ in)

NOTE: Bearings must be assembled such that thrust groove is located to the inside of the boss and at the top (± 5 degrees) of the bore.

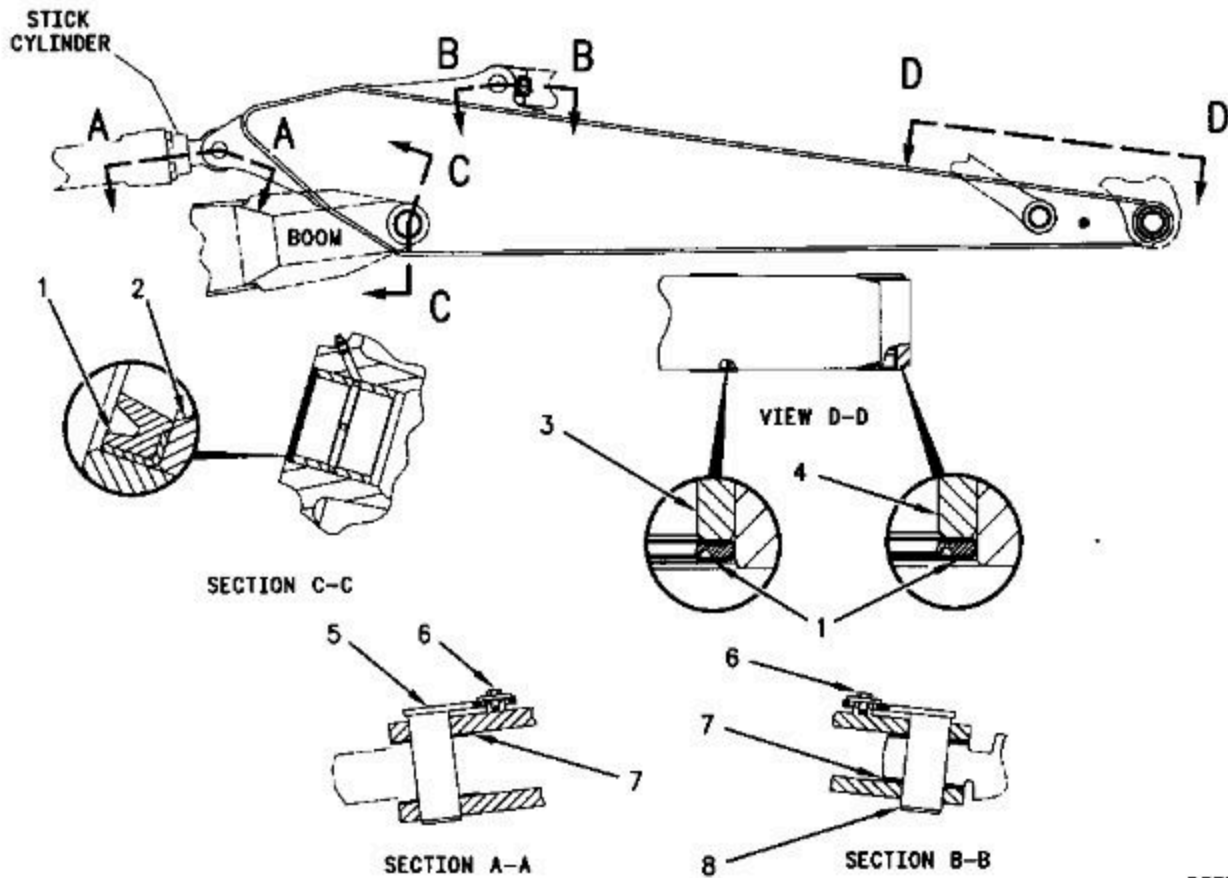
(8) 4I-4811 Pin Assembly:

Diameter after plating ... 69.850 ± 0.025 mm ($2.7500 \pm .0010$ in)

Minimum plating thickness005 mm (.0002 in)

Bore diameter for pin ... 70.037 ± 0.037 mm ($2.7574 \pm .0015$ in)

129-0981 (Long)



D55734

NOTE: All bores must be free of paint. Coat all bores for pins with lubricant including bucket and cylinder pin bores.

(1) Lubricate sealing lip lightly with lubricant being sealed.

(2) 7Y-2396 Bearing:

Outside diameter ... 106.200 ± 0.013 mm ($4.1811 \pm .0005$ in)

Inside diameter ... 90.27 ± 0.02 mm ($3.554 \pm .001$ in)

Install bearing in bore (two places) ... 9.5 ± 0.8 mm ($.37 \pm .03$ in)

(3) 7Y-2395 Bearing:

Outside diameter ... 85.160 ± 0.013 mm ($3.3528 \pm .0005$ in)

Inside diameter ... 70.23 ± 0.02 mm ($2.765 \pm .001$ in)

Install bearing in bore (two places) ... 7.5 ± 0.8 mm ($.30 \pm .03$ in)

(4) 107-9845 Bearing:

Outside diameter ... 85.160 ± 0.013 mm ($3.3528 \pm .0005$ in)

Inside diameter ... 70.23 ± 0.02 mm ($2.765 \pm .001$ in)