

Control Valve (Blade) - Install

SMCS - 5051-012-BG

Installation Procedure

Table 1

Required Tools			
Tool	Part Number	Part Description	Qty
A	FT-2674	Vacuum Cap	1

NOTICE

Care must be taken to ensure that fluids are contained during performance of inspection, maintenance, testing, adjusting, and repair of the product. Be prepared to collect the fluid with suitable containers before opening any compartment or disassembling any component containing fluids.

Refer to Special Publication, NENG2500, "Dealer Service Tool Catalog" for tools and supplies suitable to collect and contain fluids on Cat products.

Dispose of all fluids according to local regulations and mandates.

Note: Cleanliness is an important factor. Before assembly, all parts should be thoroughly cleaned in cleaning fluid. Allow the parts to air dry. Wiping cloths or rags should not be used to dry parts. Lint may be deposited on the parts which may cause later trouble. Inspect all parts. If any parts are worn or damaged, use new parts for replacement.

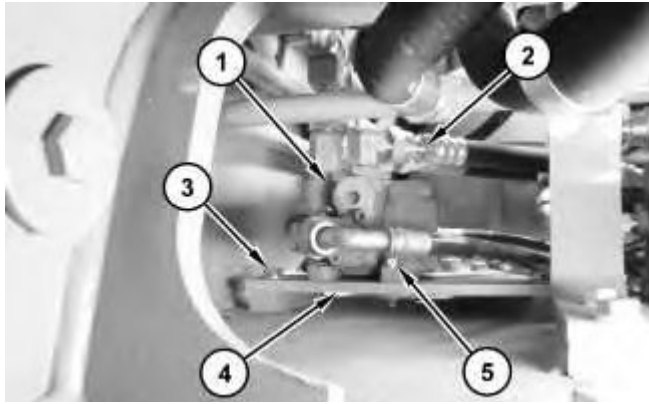
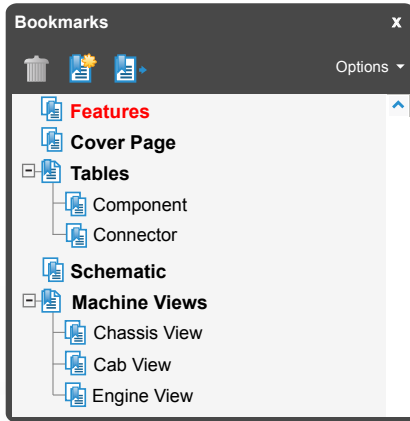


Illustration 1

g01439735

1. Position blade control valve (1) onto plate (4) and install bolts (5). Position blade control valve (1) and plate (4) and install bolts (3).
 2. Connect hose assemblies (2) on blade control valve (1).
 3. Remove Tooling (A) and install the cap on the hydraulic tank.
 4. Fill the hydraulic oil tank. Refer to Operation and Maintenance Manual, "Hydraulic Oil Level - Check".
-

INTERACTIVE SCHEMATIC



The Bookmarks panel will allow you to quickly navigate to points of interest.

****This document is best viewed at a screen resolution of 1024 X 768.***

To set your screen resolution do the following:

RIGHT CLICK on the **DESKTOP**.

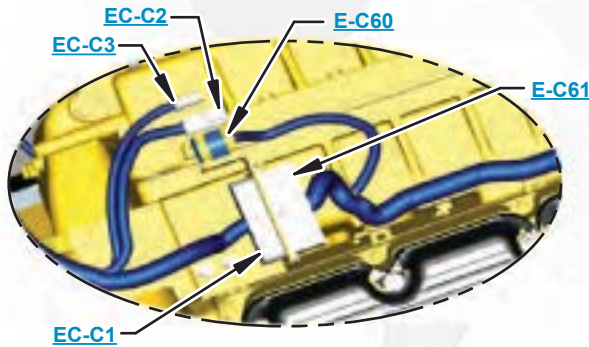
Select **PROPERTIES**.

CLICK the **SETTINGS TAB**.

MOVE THE SLIDER under **SCREEN RESOLUTION** until it shows **1024 X 768**.

CLICK OK to apply the resolution.

**Due to different monitor sizes and PDF reader preferences there may be some variance in linked schematic locations*



Click on any text that is **BLUE** and underlined. These are hyperlinks that can be used to navigate the schematic and machine views.



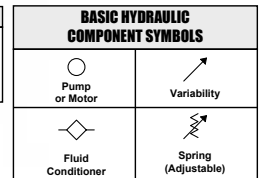
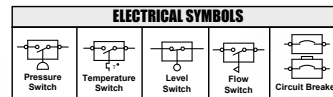
[Click here to save a copy of this interactive schematic to your desktop](#)

VIEW ALL CALLOUTS

When only one callout is showing on a machine view, clicking on this button will make all of the callouts visible. This button is located in the top right corner of every machine view page.

HOTKEYS (Keyboard Shortcuts)

	FUNCTION	KEYS
	Zoom In	“CTRL” / “+”
	Zoom Out	“CTRL” / “-”
	Fit to Page	“CTRL” / “0” (zero)
	Hand Tool	“SPACEBAR” (hold down)
	Find	“CTRL” / “F”
	Search	“CTRL” / “SHIFT” / “F”



[Click here to view the Schematic Symbols and Definitions page](#)



SCHEMATIC SYMBOLS AND DEFINITIONS

