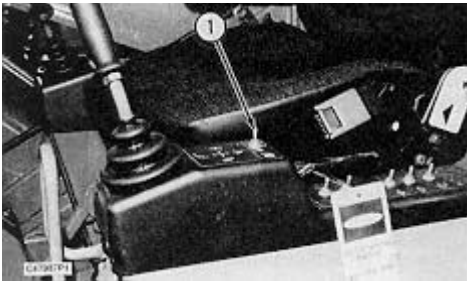


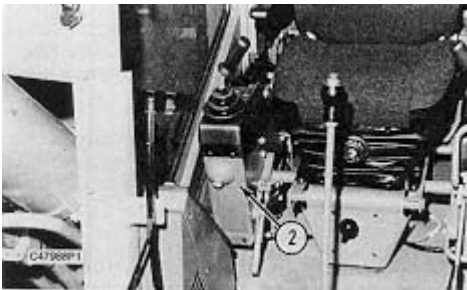
## Engine Speed Control

SMCS - 1901-010

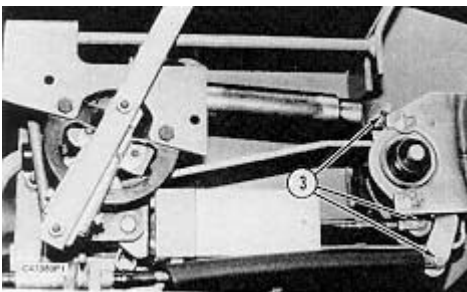
### Remove & Install Engine Speed Control



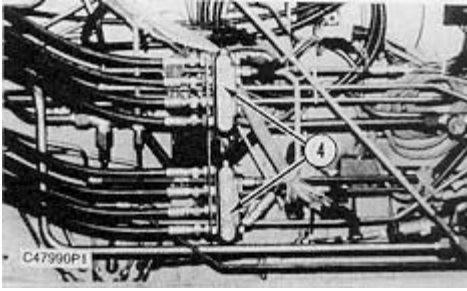
1. The engine speed control switch (1) is located to the left of the operator.



2. Remove panel (2) for access engine speed control linkage.



3. Mark and identify all lines and remove. Remove linkage (3).



4. Located under the cab identify, mark and remove all lines to the two valves (4).

**NOTE:** Install in the reverse order.

---

## Systems Operation

### 245D EXCAVATOR AND FRONT SHOVEL HYDRAULIC SYSTEM

Media Number -SENR5446-00

Publication Date -01/03/1992

Date Updated -11/10/2001

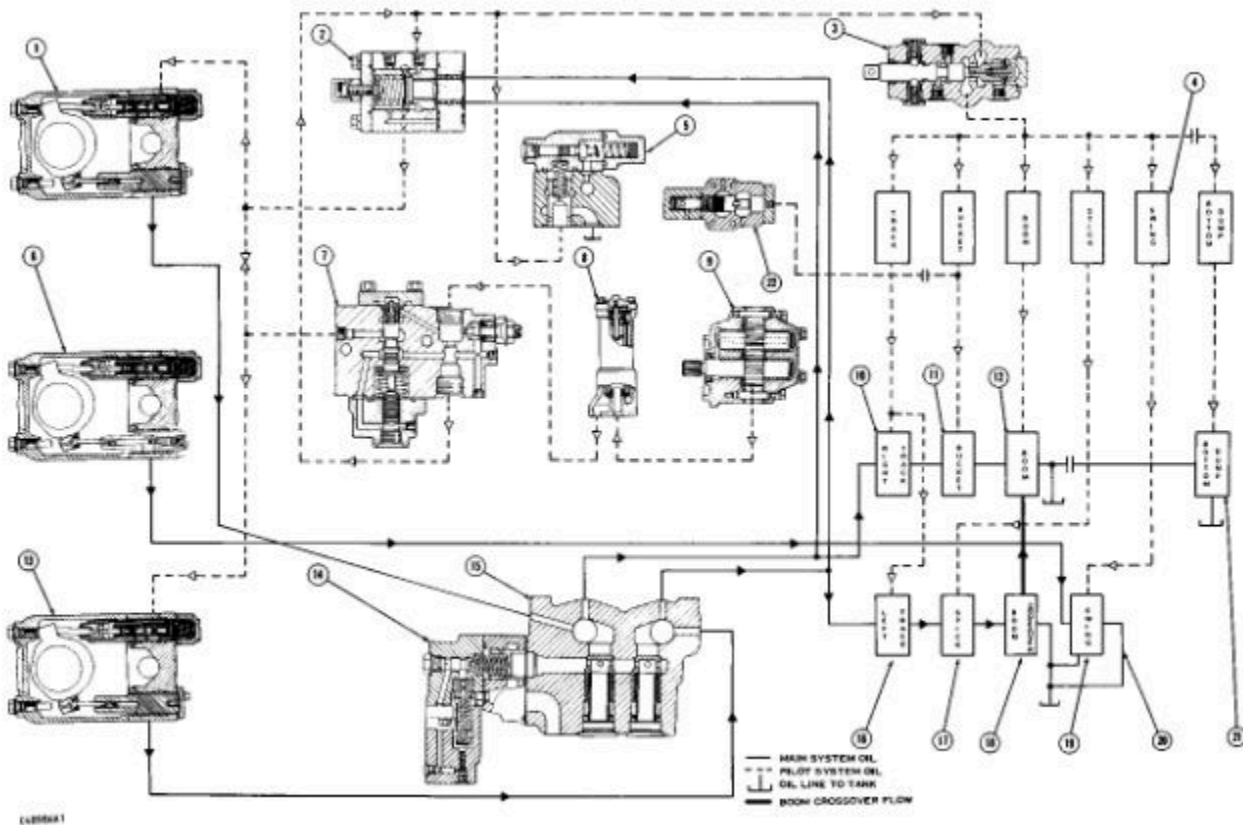
## Systems Operation

SMCS - 1000-011

## Introduction

**Reference:** For Specifications with illustrations, make reference to the Specifications For 245D Excavators and Front Shovel Hydraulic System, Form No. SENR5447. If the Specifications given in Form SENR5447 are not the same as given in the Systems Operation and the Testing and Adjusting, look at the printing date on the back cover of each book. Use the Specifications given in the book with the latest date.

## Schematic For Pump Flow And Pressure Control



(1) Axial Piston Pump (Front). This is a variable displacement pump. It supplies the main oil flow to operate the right track motor, the bucket cylinder, the boom cylinders and the bottom dump cylinders when the machine is equipped with a bottom dump bucket (front shovel).