

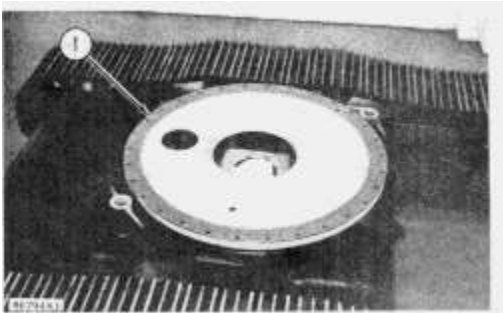
Swing Gear And Bearing

SMCS - 7063-11; 7063-12

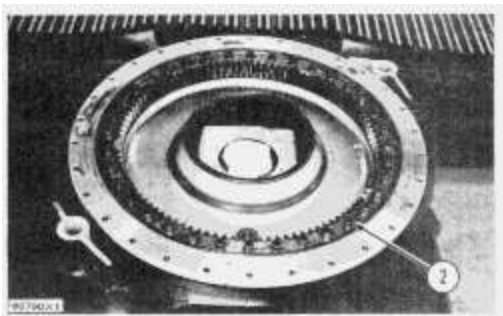
Remove Swing Gear And Bearing

start by:

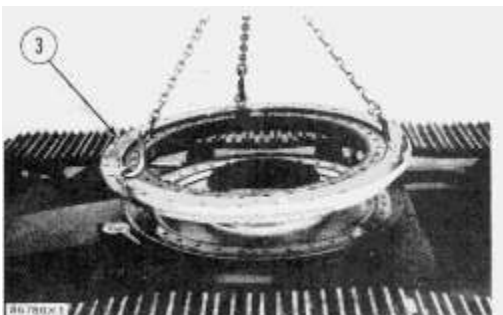
a) remove undercarriage



1. Remove the cover (1) from over the gear and bearing. The weight of the cover is 115 lb. (52 kg).



2. Remove the thirty-six bolts (2) that hold the gear and bearing to the carbody frame.



3. Install three 7/8"-9 NC forged eyebolts and nuts in the gear and bearing. Fasten a hoist and remove the gear

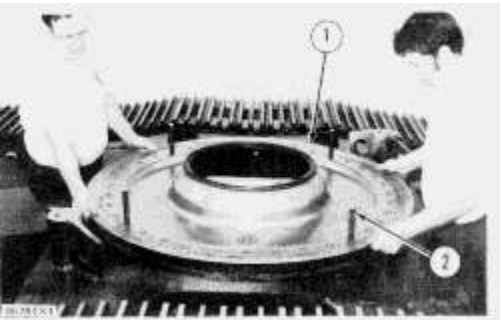
and bearing (3). The weight of the gear and bearing is 1000 lb. (450 kg).



4. Remove pan (4) from the carbony frame. The weight of the pan is 65 lb. (29 kg).

Install Swing Gear And Bearing

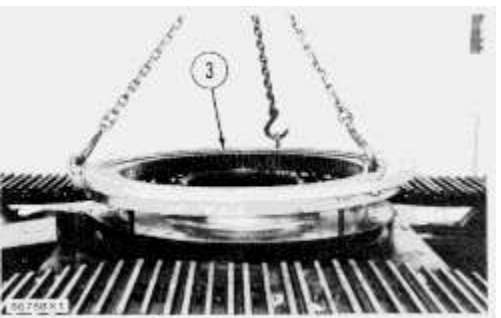
1. Clean the old liquid gasket material from the contact surfaces of the pan and carbony frame. Put 7M7260 Liquid Gasket on the surfaces.



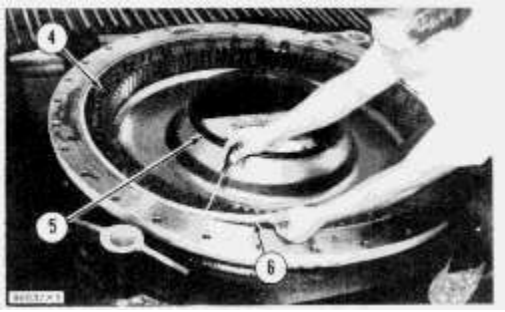
2. Install four 7/8"-9 NC guide pins (2) in the carbony frame. Use the pins as a guide and install pan (1) on the carbony frame.

3. Clean the old liquid gasket material from the contact surfaces of the pan and gear.

4. Inspect the seal on the bottom of the gear and bearing. Install a new seal as needed.



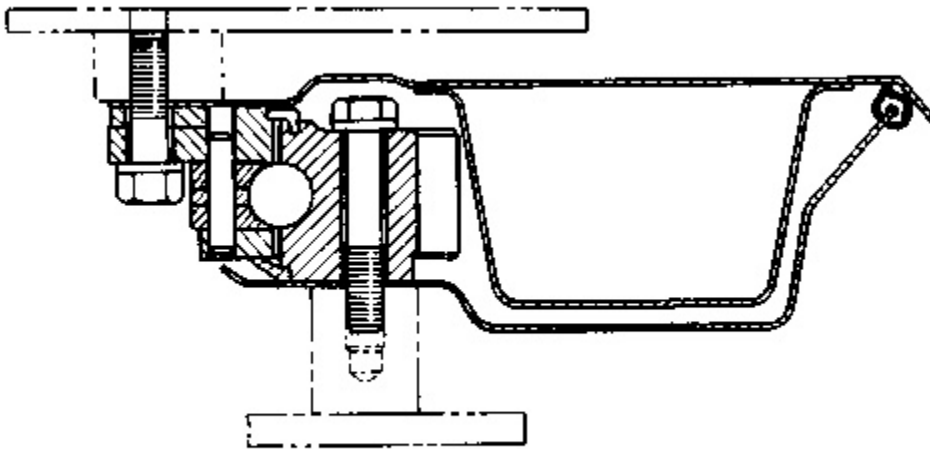
5. Install three 7/8"-9 NC forged eyebolts and nuts in the gear and bearing. Fasten a hoist to the gear and bearing. Put 7M7260 Liquid Gasket on the contact surfaces of the pan and gear. Put the gear and bearing (3) in position using the guide pins as a guide.



6. Install the thirty-six bolts (4) that hold the gear and bearing to the carbody frame. Tighten the bolts to a torque of 600 ± 40 lb.ft. (810 ± 55 N·m).

7. Inspect the seal (6). Install a new seal if necessary.

8. Clean the old liquid gasket material from the contact surfaces of the bearing and cover. Put 7M7260 Liquid Gasket on the surfaces.



75759X2

9. Put 5P960 Multipurpose Type Grease on the surfaces of seal (5) that make contact with the cover. Put the cover in position over the gear and bearing.

end by:

a) install undercarriage
