

draw detent and valve spool assembly from valve body (13). Remove spacer (10), back-up ring (11) and "O" ring from front end of valve body and "O" ring (18) from detent end of valve body. Clamp flats on valve spool in a soft jawed vise. Use an Allen wrench to loosen the detent retaining screw. Remove from vise and hold assembly horizontally close to a bench top. Unscrew detent assembly from valve spool. See Fig. 173. Lay detent assembly aside. Remove spring (17—Fig. 171 or 172), poppet (16) and ball (15) from spool (14). Remove collar (19) with "O" rings (20 and

21) and back-up ring (22) from spool. Remove shims (23) and "O" ring from detent assembly.

NOTE: DO NOT attempt to disassemble the detent assembly as no parts are available and special equipment is required for assembly.

To remove the hydraulic check valve(s), press inward on plug (2), remove snap ring (1), then plug with "O" ring (4) and back-up ring (3). Remove spring (5) and check ball (6).

Clean and inspect all parts for excessive wear or other damage. A seal kit containing all seals and "O" rings and repair kits for mechanical check valve (items 26 through 33) and for hydraulic check valve (items 1 through 6) are available for repair. Valve spool (14) and body (13) are a matched set and are not available separately.

Use all new seals and "O" rings and reassemble by reversing the disassembly procedure. When reinstalling auxiliary valves and end plate, tighten the three cap screws to a torque of 12-15 ft.-lbs. (16-20 N·m). Balance of reinstallation is the reverse of removal procedures.

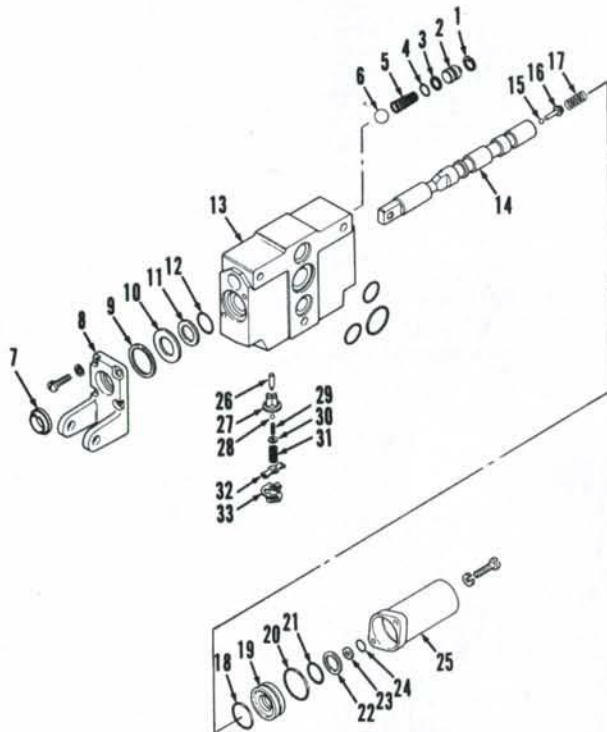


Fig. 172—Exploded view of Bosch No. 052169006 auxiliary valve. Detent assembly not shown. Refer to Fig. 171 for legend except for the following.

- | | |
|-------------------|--------------------|
| 26. Actuating pin | 30. Washer |
| 27. Check valve | 31. Spring |
| 28. Ball | 32. Valve retainer |
| 29. Spring | 33. Retaining clip |



Fig. 173—View of detent assembly removed from valve spool. Do not disassemble detent unit as no parts are available.

FENDERS, FUEL TANK AND PLATFORM

Models Without Cab

144. REMOVE AND REINSTALL. Remove the hood top panel above batteries, then disconnect battery cables. Unbolt and remove the roll over protection system (ROPS). Drain fuel from tank. Disconnect fuel supply and fuel return lines. Disconnect the fuel tank balance line at both sides. Unbolt and remove seat assembly. Disconnect electrical connectors at right and left sides and disconnect the ground leads. Remove the seat deck nuts. Remove knobs and rub-

ber boots from speed transmission and range transmission shift levers. Remove hydraulic control lever and pto lever knobs. Remove screws and remove left and right lower control panels. Remove park brake lever bolts and foot plate to fender bolts. Remove fender mounting bolts at both sides. Attach a sling around tank as shown in Fig. 174 and using a hoist, lift assembly from tractor.

Reinstall the assembly by reversing the removal procedure.

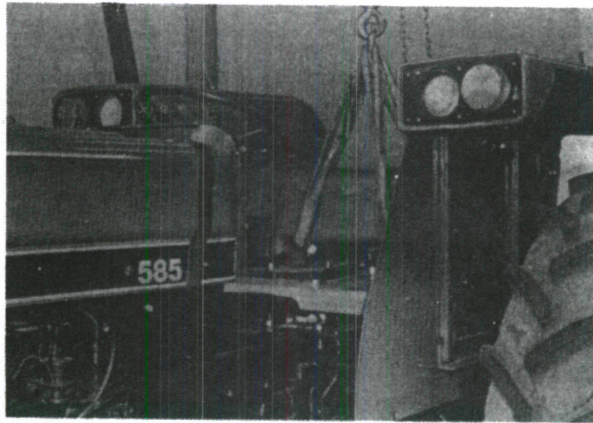


Fig. 174—View showing sling and hoist used to lift off fenders, fuel tank and platform assembly.

CAB

Models So Equipped

145. REMOVE AND REINSTALL. To remove the cab, remove battery cover and disconnect battery cables. Remove cab floor mat and insulation. Unbolt and remove seat. Remove rubber cover from seat platform, then unbolt and remove the access panel. Remove knobs from hydraulic control levers and from speed and range transmission shift levers. Unbolt and remove left console. Disconnect park brake linkage and park brake switch, then unbolt and remove the park brake lever. Remove the four speed and range lever carrier bolts. Unbolt and remove the hydraulic lever operating console. Drive out roll pins and remove auxiliary valve levers. Remove the four hydraulic lever carrier bolts. Disconnect heater hoses. Remove steering column shroud, then unbolt steering support. Unbolt and remove cab floor panel. If so equipped, disconnect power shift electrical connector. Remove hood top rear panel and disconnect wiring harness connectors. Drive out roll pin and disconnect hitch leveling screw extension. Support rear of tractor and remove rear wheels. Remove rear cab center mount bolts. Disconnect air conditioning self sealing connections. Unbolt receiver-drier and tie unit out of the way to transmission. Disconnect differential lock pedal linkage. Disconnect the sev-

en pin electrical connector and disconnect fuel sender wire. Remove plugs from each side of cab and install M16 lifting eyes. Connect a sling and hoist to lifting eyes as shown in Fig. 175. Remove front cab mounting bolts, pads and spacers. Carefully raise cab and remove wiring harness rearward. Remove cab from tractor.

Reinstall cab by reversing the removal procedure. Tighten front and rear cab mounting bolts to a torque of 110 ft.-lbs. (149 N·m). Tighten rear wheel nuts to a torque of 205-220 ft.-lbs. (278-298 N·m).

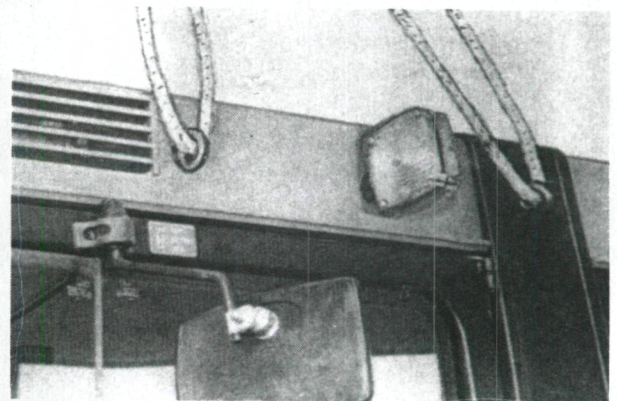


Fig. 175—Install lift eyes and attach sling and hoist to lift cab from tractor.