

SPEEDOMETER GEARBOX

- Before installing the speedometer gearbox, apply grease to its dust seal lip.

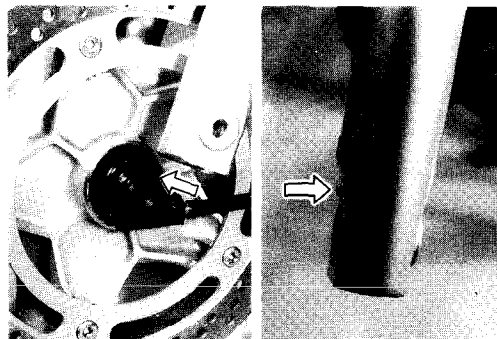
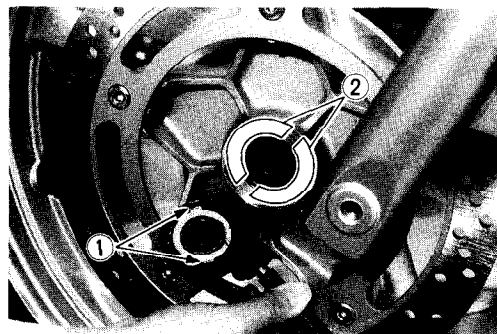
(For U.S.A. model)

99000-25030 : SUZUKI SUPER GREASE "A"

(For the other models)

99000-25010 : SUZUKI SUPER GREASE "A"

- Fit two drive lugs ① into recesses ② of the wheel hub.
- Set the stopper on the speedometer gearbox to lug on the left front fork.
- When tightening the front axle, make sure that the speedometer gearbox is in position and the speedometer cable does not bend sharply.

**AXLE SHAFT**

- Tighten the axle shaft to the specified torque.

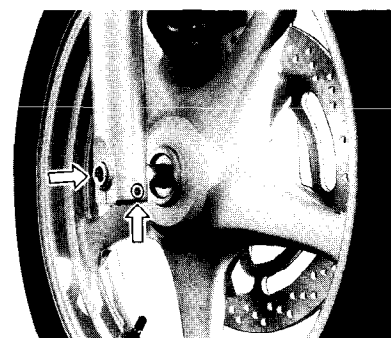
Tightening torque : 36 – 52 N·m

(3.6 – 5.2 kg-m, 26.0 – 37.5 lb-ft)

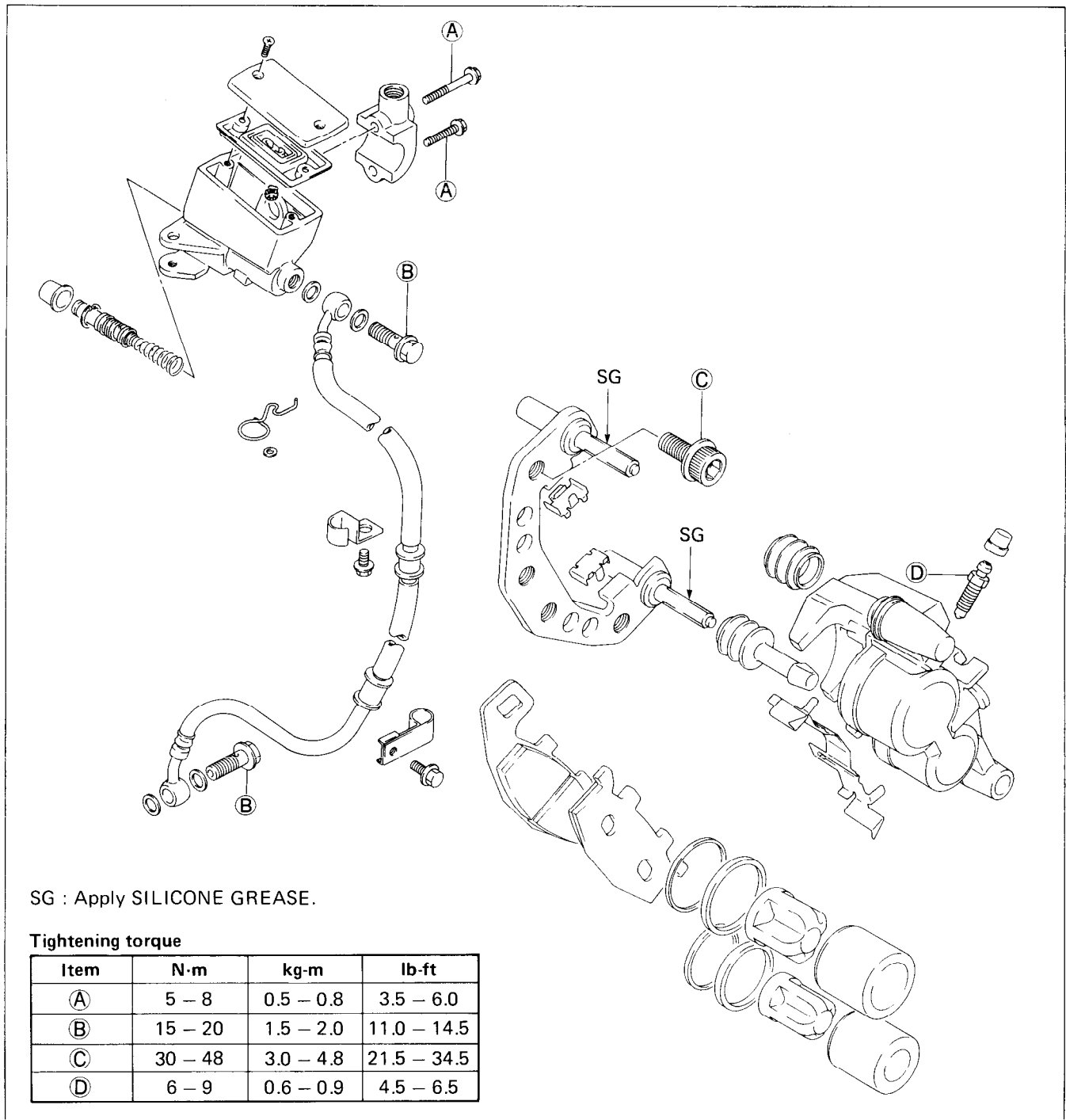
- Tighten the axle pinch bolt to the specified torque.

Tightening torque : 18 – 28 N·m

(1.8 – 2.8 kg-m, 13.0 – 20.0 lb-ft)



FRONT BRAKE



BRAKE PAD REPLACEMENT

1. Remove the brake caliper by removing the mounting bolts.

09900-00410 : Hexagon wrench set

2. Remove the pads.

CAUTION:

- * Do not operate the brake lever while dismounting the pads.
- * Replace the brake pads as a set, otherwise braking performance will be adversely affected.

